



2017 SPEC BOOK



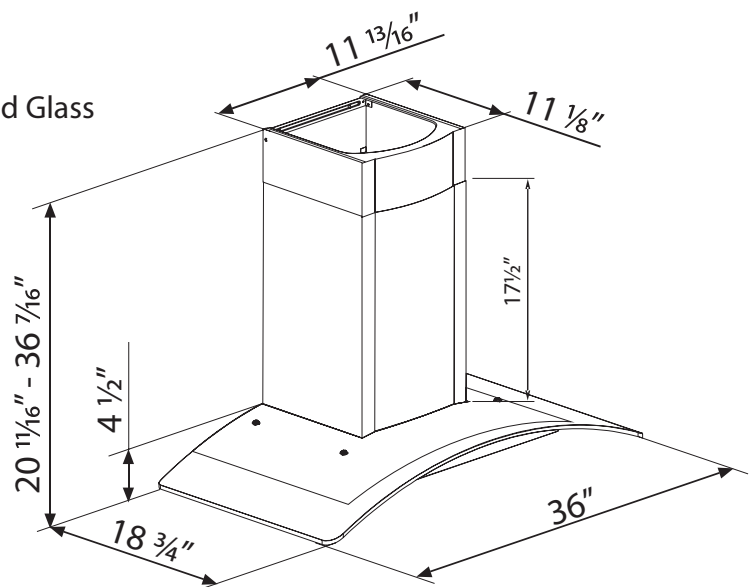
Astro 36SS 812-0611

Wall Mounted Kitchen Hood

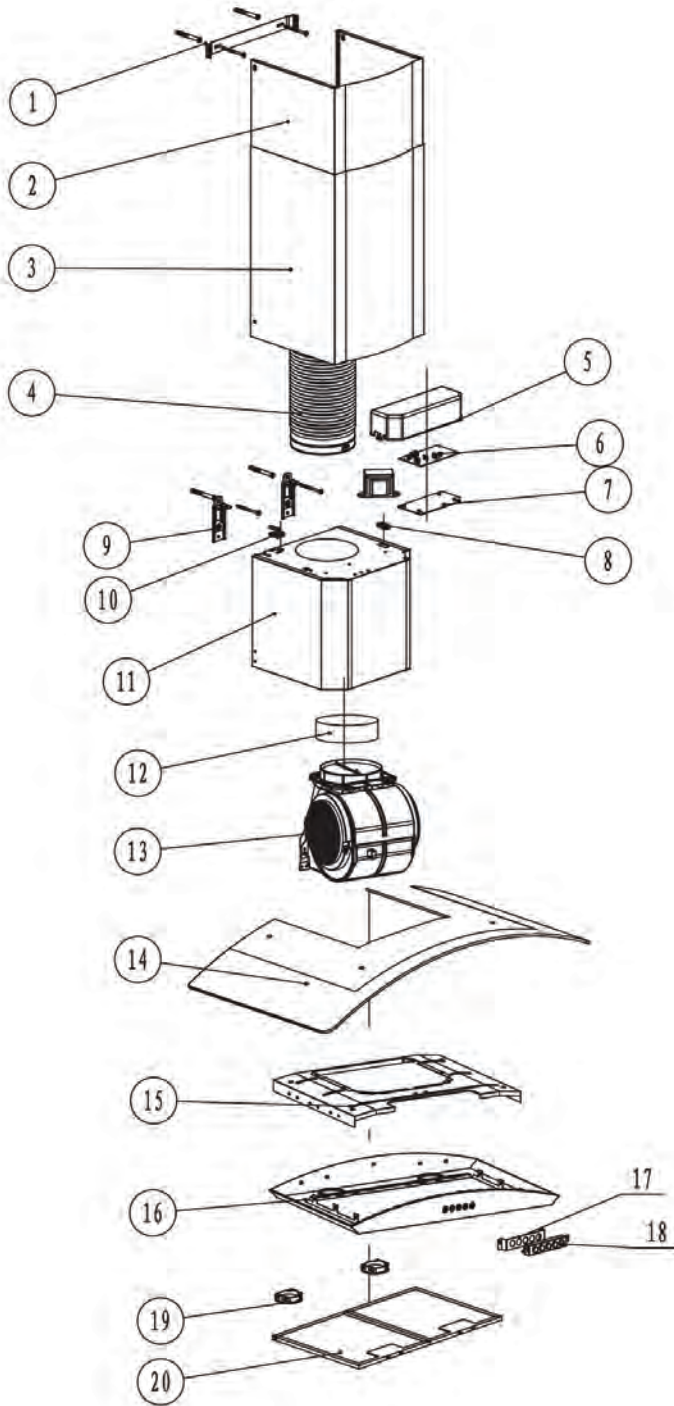
- Width: 36"
- Dimension: 36"W x 18³/₄"D x 20¹¹/₁₆" - 36⁷/₁₆"H
- Light Type: 2 x 2W LED
- Air Outlet: 6"
- Finish: Satin Finish Stainless Steel and Tempered Glass
- Motor: 150W with 110 plug
- Voltage: 120V
- Vent Pipe: 79" Adjustable Vent Pipe
- Vent Type: Ducted or Recirculated
- Airflow: 350 CFM
- Noise Level: 65 dB

Features

- Direct Vent or Recirculating
- 3 Fan Speeds
- Electronic Switch
- Low Noise Operation
- Dishwasher Safe Aluminum Filter
- Charcoal Filters Included for Recirculating



*Dimensions are nominal values and are subject to normal manufacturing/packaging tolerance and variation.



1	Shroud Bracket
2	Inner Shroud
3	Outer Shroud
4	Expandable Vent Pipe
5	Circuit Board Cover
6	Circuit Board
7	Circuit Board Bracket
8	Electrical Wire Rubber Bushing
9	Installation Hanger
10	Electrical Wire Clamp
11	Metal Blower
12	Plastic Collar
13	Motor Assembly
14	Main Glass
15	Metal Frame
16	Steel Frame with LED Light Bracket
17	Switch Bracket
18	Switch Assembly
19	LED Light
20	Aluminum Filter



Charcoal Filters (Set)
For Use With Recirculating Vent



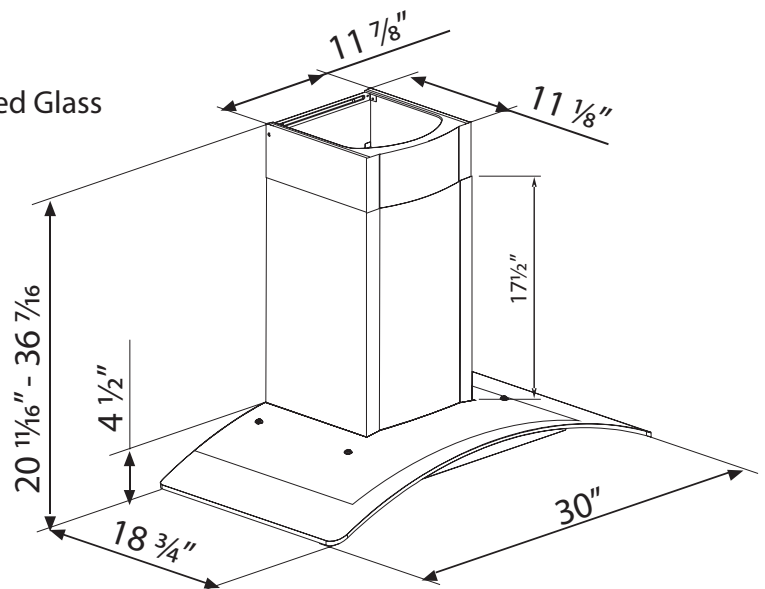
Astro 30SS 812-0612

Wall Mounted Kitchen Hood

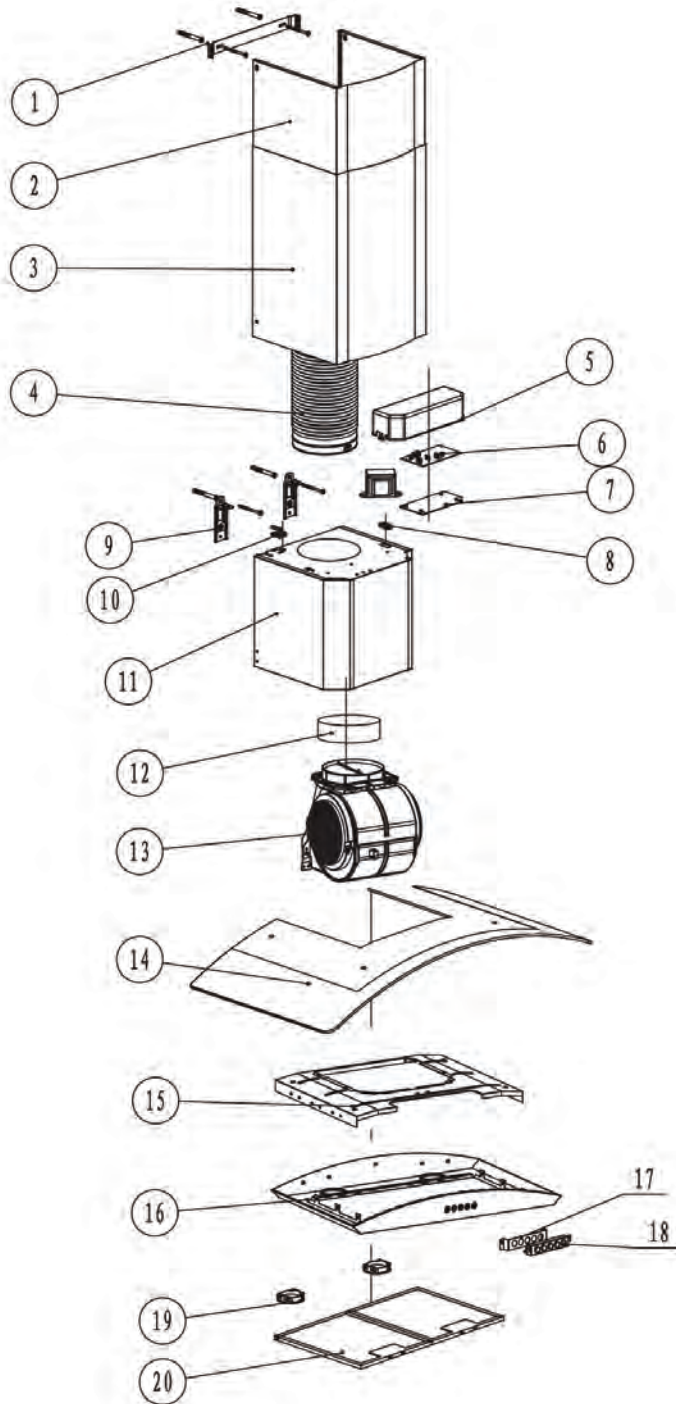
- Width: 30"
- Dimension: 30"W x 18³/₄"D x 20¹/₁₆" - 36⁷/₁₆"H
- Light Type: 2 x 2W LED
- Air Outlet: 6"
- Finish: Satin Finish Stainless Steel and Tempered Glass
- Motor: 150W with 110 plug
- Voltage: 120V
- Vent Pipe: 79" Adjustable Vent Pipe
- Vent Type: Ducted or Recirculated
- Airflow: 350 CFM
- Noise Level: 65 dB

Features

- Direct Vent or Recirculating
- 3 Fan Speeds
- Electronic Switch
- Low Noise Operation
- Dishwasher Safe Aluminum Filter
- Charcoal Filters Included for Recirculating



*Dimensions are nominal values and are subject to normal manufacturing/packaging tolerance and variation.



1	Shroud Bracket
2	Inner Shroud
3	Outer Shroud
4	Expandable Vent Pipe
5	Circuit Board Cover
6	Circuit Board
7	Circuit Board Bracket
8	Electrical Wire Rubber Bushing
9	Installation Hanger
10	Electrical Wire Clamp
11	Metal Blower
12	Plastic Collar
13	Motor Assembly
14	Main Glass
15	Metal Frame
16	Steel Frame with LED Light Bracket
17	Switch Bracket
18	Switch Assembly
19	LED Light
20	Aluminum Filter



Charcoal Filters (Set)
For Use With Recirculating Vent



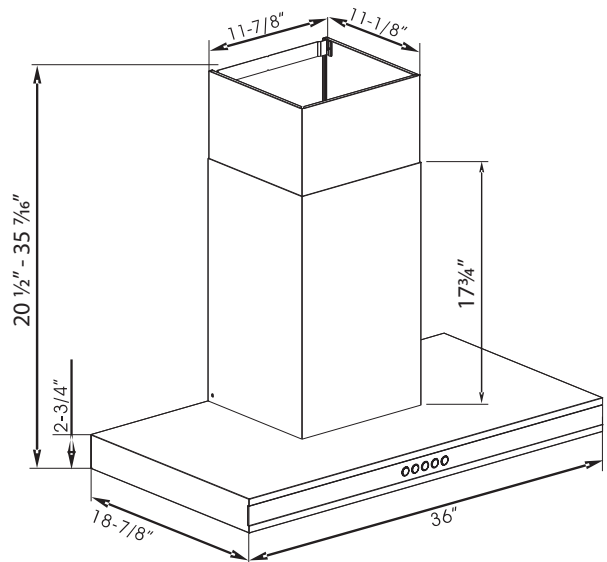
Cosmo 36SS 812-0613

Wall Mounted Kitchen Hood

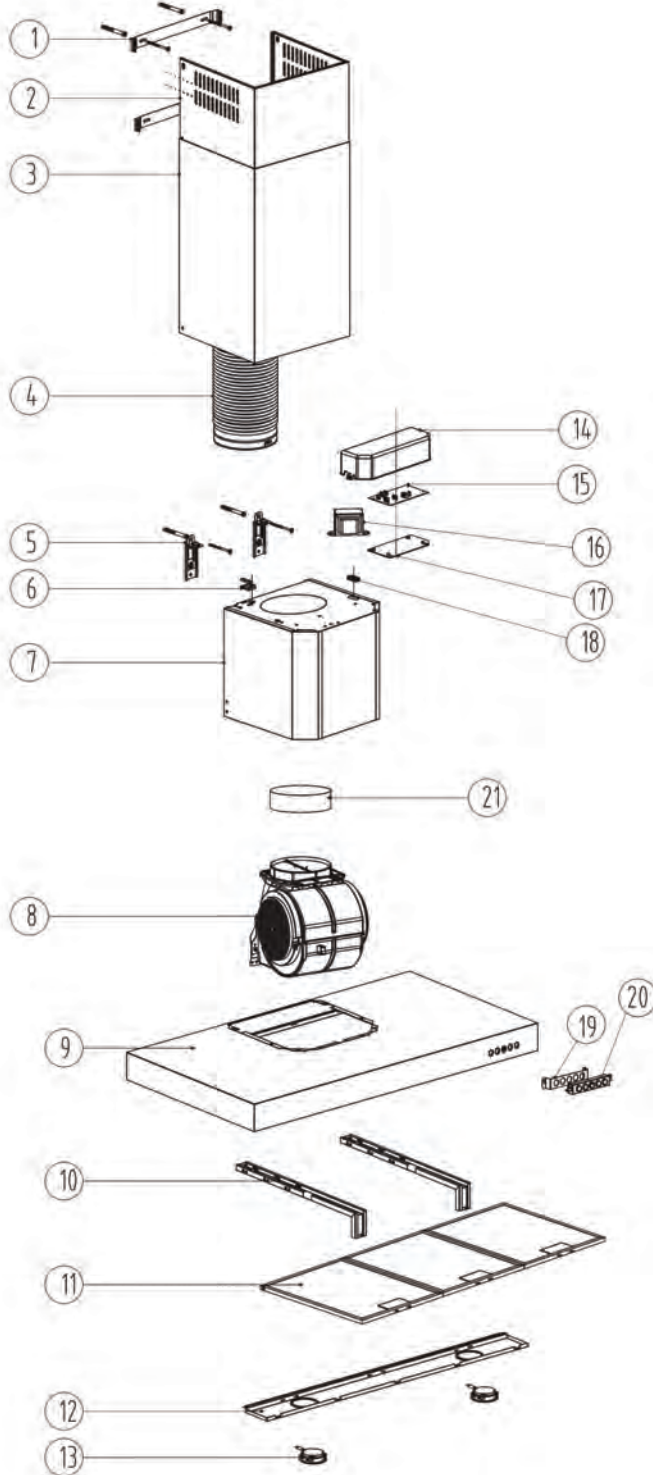
- Width: 36"
- Dimension: 36"W x 18⁷/₈"D x 20¹/₂"- 35⁷/₁₆"H
- Light Type: 2 x 2W LED
- Air Outlet: 6"
- Finish: Satin Finish Stainless Steel
- Motor: 150W with 110 plug
- Voltage: 120V
- Vent Pipe: 79" Adjustable Vent Pipe
- Vent Type: Ducted or Recirculated
- Airflow: 350 CFM
- Noise Level: 65 dB

Features

- Direct Vent or Recirculating
- 3 Fan Speeds
- Electronic Switch
- Low Noise Operation
- Dishwasher Safe Aluminum Filter
- Charcoal Filters Included for Recirculating



*Dimensions are nominal values and are subject to normal manufacturing/packaging tolerance and variation.



1	Shroud Bracket
2	Inner Shroud
3	Outer Shroud
4	Expandable Vent Pipe
5	Mounting Bracket
6	Electrical Wire Rubber Bushing
7	Metal Blower Assembly
8	Motor Assembly
9	Steel Frame
10	Steel Frame Brackets
11	Aluminum Filter
12	LED Light Bracket
13	LED Light Assembly
14	Circuit Board Cover
15	Circuit Board
16	Electrical Transformer
17	Circuit Board Bracket
18	Electrical Wire Clamp
19	Switch Bracket
20	Switch Assembly
21	Plastic Collar



Charcoal Filters (Set)
For Use With Recirculating Vent



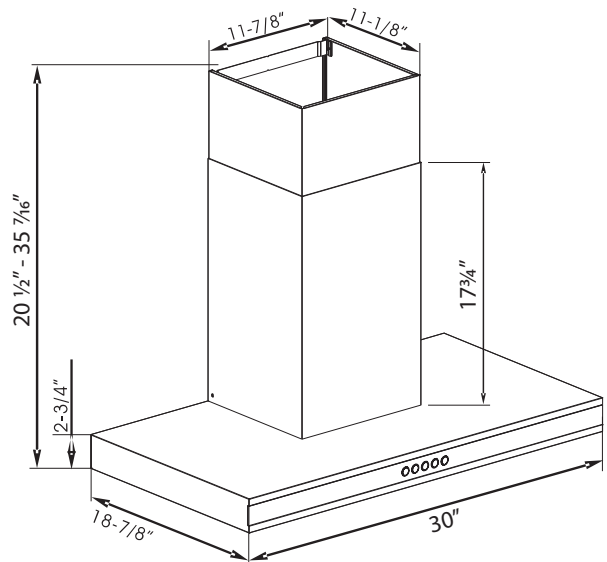
Cosmo 30SS 812-0614

Wall Mounted Kitchen Hood

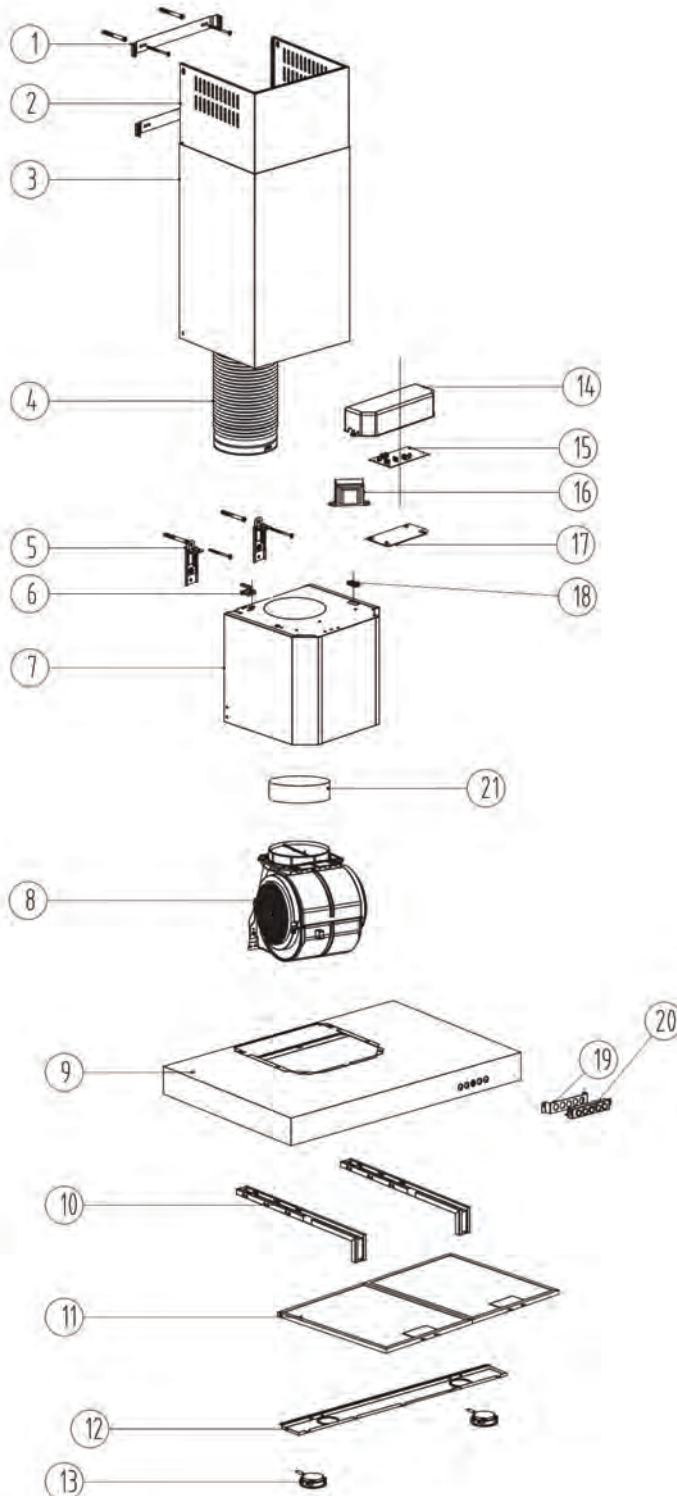
- Width: 30"
- Dimension: 30"W x 18⁷/₈"D x 20¹/₂" - 35⁷/₁₆"H
- Light Type: 2 x 2W LED
- Air Outlet: 6"
- Finish: Satin Finish Stainless Steel
- Motor: 150W with 110 plug
- Voltage: 120V
- Vent Pipe: 79" Adjustable Vent Pipe
- Vent Type: Ducted or Recirculated
- Airflow: 350 CFM
- Noise Level: 65 dB

Features

- Direct Vent or Recirculating
- 3 Fan Speeds
- Electronic Switch
- Low Noise Operation
- Dishwasher Safe Aluminum Filter
- Charcoal Filters Included for Recirculating



*Dimensions are nominal values and are subject to normal manufacturing/packaging tolerance and variation.



1	Shroud Bracket
2	Inner Shroud
3	Outer Shroud
4	Expandable Vent Pipe
5	Mounting Bracket
6	Electrical Wire Rubber Bushing
7	Metal Blower Assembly
8	Motor Assembly
9	Steel Frame
10	Steel Frame Brackets
11	Aluminum Filter
12	LED Light Bracket
13	LED Light Assembly
14	Circuit Board Cover
15	Circuit Board
16	Electrical Transformer
17	Circuit Board Bracket
18	Electrical Wire Clamp
19	Switch Bracket
20	Switch Assembly
21	Plastic Collar



Charcoal Filters (Set)
For Use With Recirculating Vent



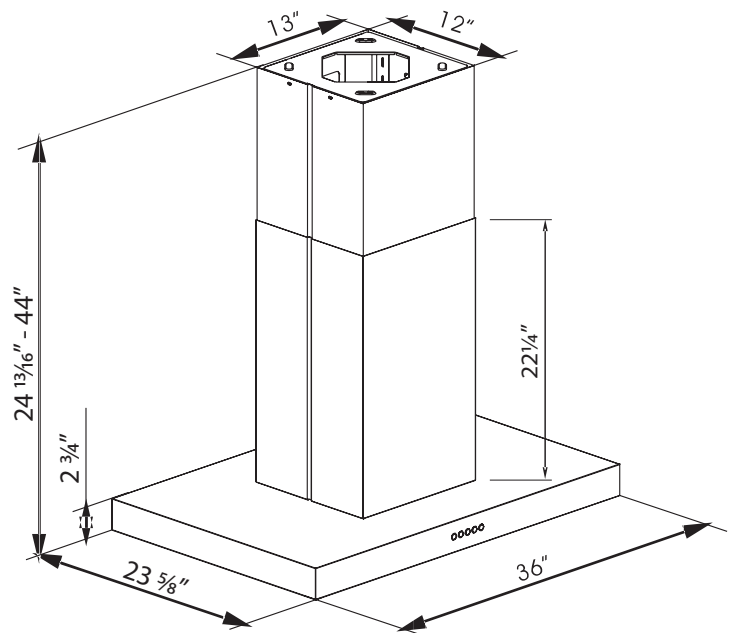
Orion 36SS 812-0615

Island Kitchen Hood

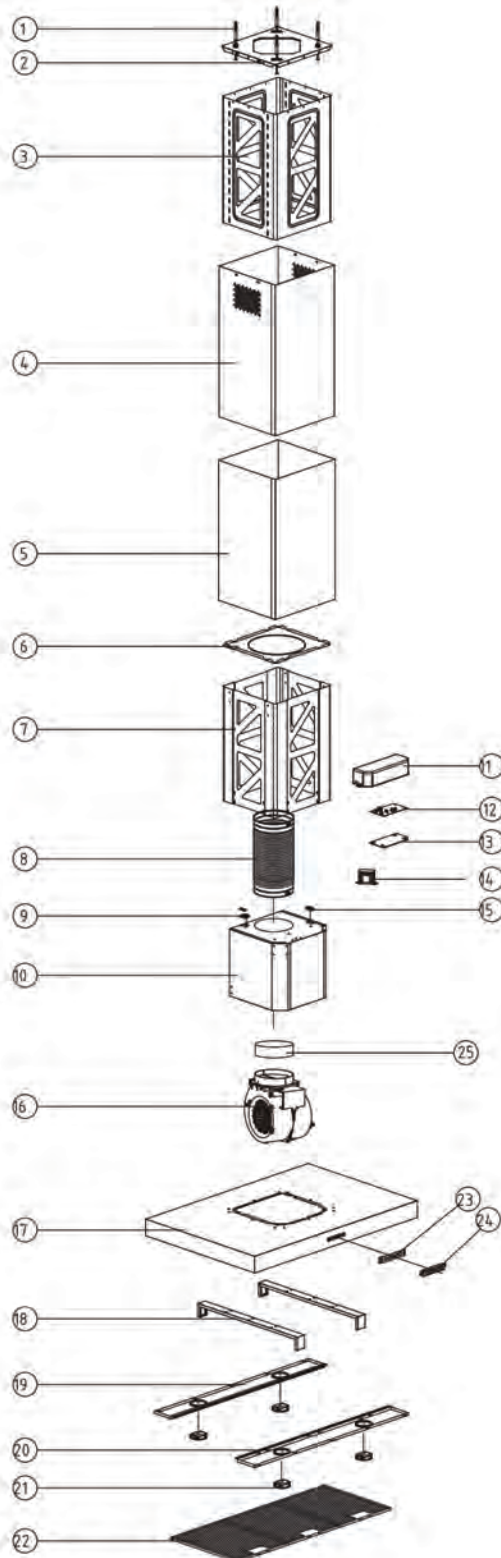
- Width: 36"
- Dimension: 36"W x 23⁵/₈"D x 24¹³/₁₆" - 44"H
- Light Type: 4 x 2W LED
- Air Outlet: 6"
- Finish: Satin Finish Stainless Steel
- Motor: 315W with 110 plug
- Voltage: 120V
- Vent Pipe: 79" Adjustable Vent Pipe
- Vent Type: Ducted or Recirculated
- Airflow: 530 CFM
- Noise Level: 72 dB

Features

- Direct Vent or Recirculating
- 3 Fan Speeds
- Electronic Switch
- Low Noise Operation
- Dishwasher Safe Aluminum Filter
- Charcoal Filters Included for Recirculating



*Dimensions are nominal values and are subject to normal manufacturing/packaging tolerance and variation.



1	Wall Anchor
2	Ceiling Bracket
3	Shroud Bracket
4	Inner Shroud
5	Outer Shroud
6	Metal Bracket
7	Inner Bottom Bracket
8	Expandable Vent Pipe
9	Electrical Wire Rubber Bushing
10	Metal Blower Assembly
11	Circuit Board Cover
12	Circuit Board
13	Circuit Board Bracket
14	Electrical Transformer
15	Electrical Wire Clamp
16	Motor Assembly
17	Steel Frame
18	Reinforced Metal Bar for Steel Frame
19	Rear LED Light Bracket
20	Front LED Light Bracket
21	LED Light
22	Aluminum Filter
23	Switch Bracket
24	Electrical Switch
25	Plastic Collar



Charcoal Filters (Set)
For Use With Recirculating Vent



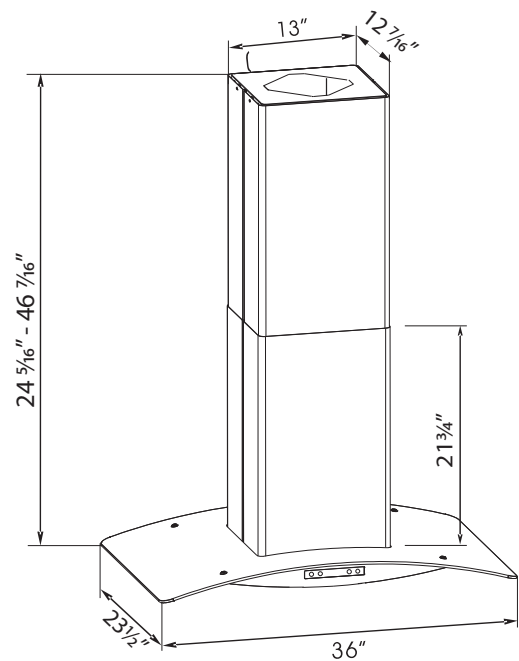
Vega 36SS 812-0616

Island Kitchen Hood

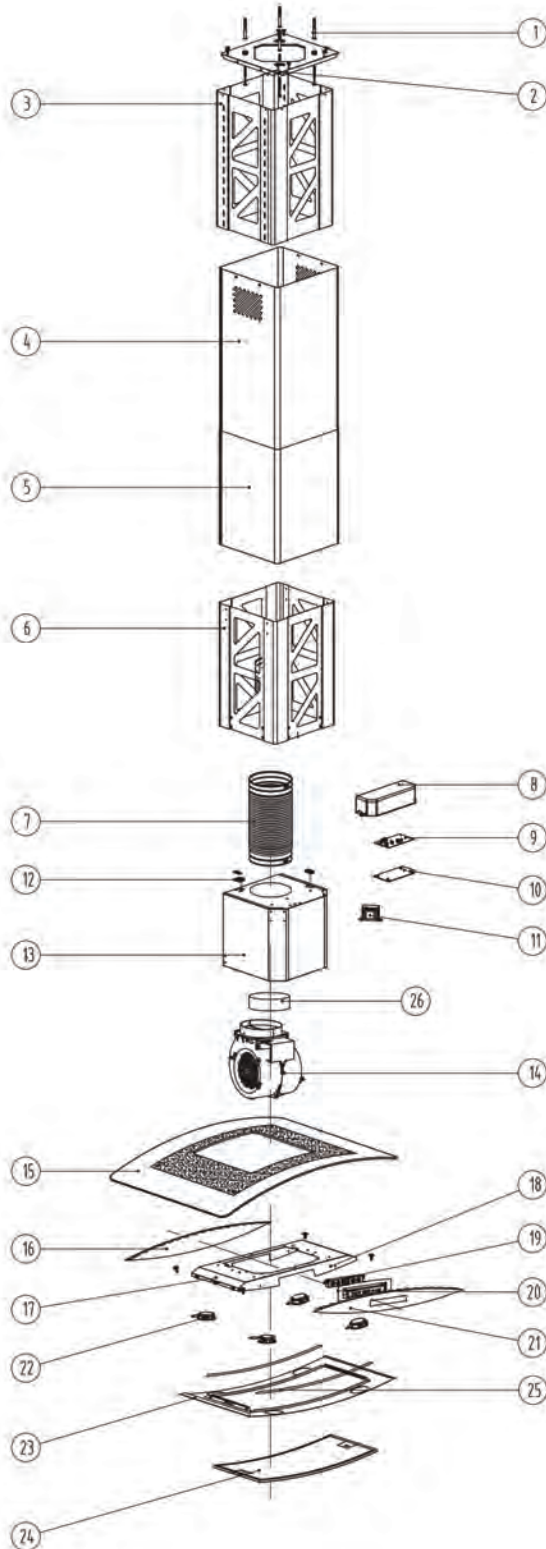
- Width: 36"
- Dimension: 36"W x 23½"D x 24⁵/₁₆" - 46⁷/₁₆"H
- Light Type: 4 x 2W LED
- Air Outlet: 6"
- Finish: Satin Finish Stainless Steel and Tempered Glass
- Motor: 315W with 110 plug
- Voltage: 120V
- Vent Pipe: 79" Adjustable Vent Pipe
- Vent Type: Ducted or Recirculated
- Airflow: 530 CFM
- Noise Level: 72 dB

Features

- Direct Vent or Recirculating
- 3 Fan Speeds
- Low Noise Operation
- Soft Touch Electronic Switch
- Dishwasher Safe Aluminum Filter
- Charcoal Filters Included for Recirculating



*Dimensions are nominal values and are subject to normal manufacturing/packaging tolerance and variation.



1	Wall Anchor
2	Ceiling Bracket
3	Shroud Bracket
4	Inner Shroud
5	Outer Shroud
6	Inner Bottom Bracket
7	Expandable Vent Pipe
8	Circuit Board Cover
9	Circuit Board
10	Circuit Board Bracket
11	Electrical Transformer
12	Electrical Wire Rubber Bushing
13	Metal Blower Assembly
14	Motor Assembly
15	Main Glass
16	Rear Board for Steel Frame
17	Metal Frame
18	Switch Bracket
19	Switch Assembly
20	Switch
21	Front Panel
22	LED Light Assembly
23	Steel Frame with LED Light Socket Bracket
24	Aluminum Filter
25	Reinforced Metal Bar
26	Plastic Air Exit



Charcoal Filters (Set)
For Use With Recirculating Vent



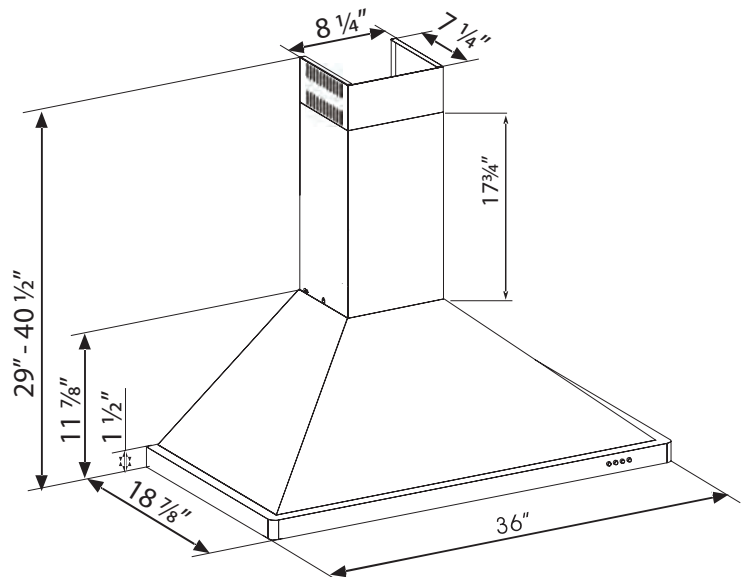
Nova 36SS 812-0617

Wall-Mounted Kitchen Hood

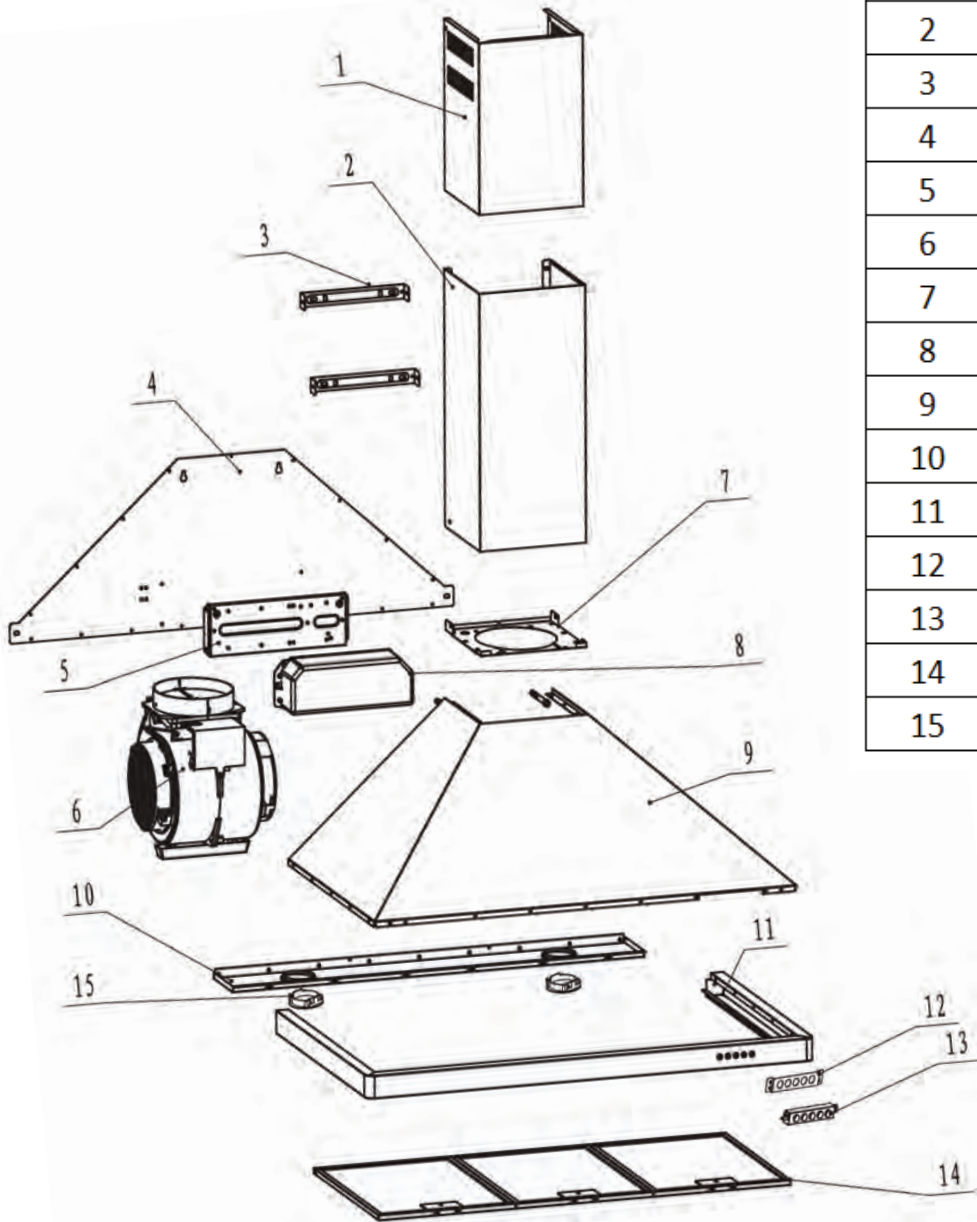
- Width: 36"
- Dimension: 36"W x 18⁷/₈"D x 29"- 40¹/₂"H
- Light Type: 2 x 2W LED
- Air Outlet: 6"
- Finish: Satin Finish Stainless Steel
- Motor: 150W with 110 plug
- Voltage: 120V
- Vent Pipe: 79" Adjustable Vent Pipe
- Vent Type: Ducted or Recirculated
- Airflow: 350 CFM
- Noise Level: 65 dB

Features

- Direct Vent or Recirculating
- 3 Fan Speeds
- Low Noise Operation
- Electronic Switch
- Dishwasher Safe Aluminum Filter
- Charcoal Filters Included for Recirculating



*Dimensions are nominal values and are subject to normal manufacturing/packaging tolerance and variation.



1	Inner Shroud
2	Outer Shroud
3	Wall Mounting Bracket
4	Hood Bracket Panel
5	Electrical Board Bracket
6	Motor Assembly
7	Motor Mounting Bracket
8	Circuit Board Cover
9	Main Hood Cover
10	LED Light Bracket
11	Stainless Steel Housing
12	Switch Bracket
13	Electronic Switch
14	Aluminum Filter
15	LED Light



Charcoal Filters (Set)
For Use With Recirculating Vent



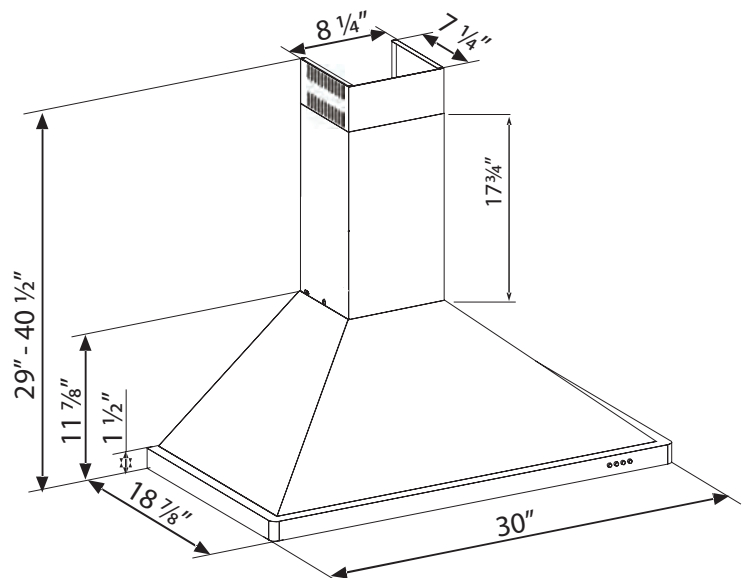
Nova 30SS 812-0618

Wall-Mounted Kitchen Hood

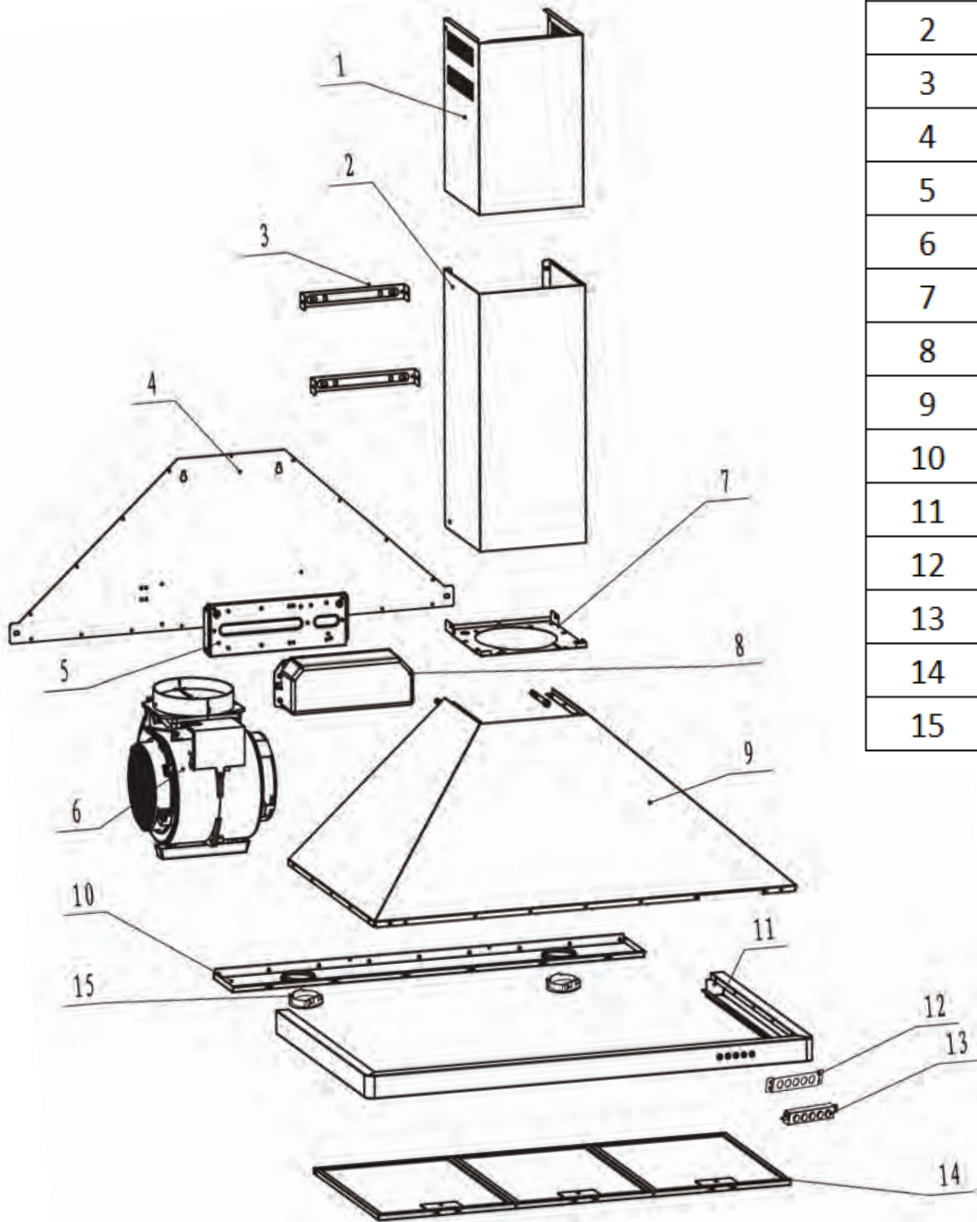
- Width: 30"
- Dimension: 30"W x 18⁷/₈"D x 29"- 40¹/₂"H
- Light Type: 2 x 2W LED
- Air Outlet: 6"
- Finish: Satin Finish Stainless Steel
- Motor: 150W with 110 plug
- Voltage: 120V
- Vent Pipe: 79" Adjustable Vent Pipe
- Vent Type: Ducted or Recirculated
- Airflow: 350 CFM
- Noise Level: 65 dB

Features

- Direct Vent or Recirculating
- 3 Fan Speeds
- Low Noise Operation
- Electronic Switch
- Dishwasher Safe Aluminum Filter
- Charcoal Filters Included for Recirculating



*Dimensions are nominal values and are subject to normal manufacturing/packaging tolerance and variation.



1	Inner Shroud
2	Outer Shroud
3	Wall Mounting Bracket
4	Hood Bracket Panel
5	Electrical Board Bracket
6	Motor Assembly
7	Motor Mounting Bracket
8	Circuit Board Cover
9	Main Hood Cover
10	LED Light Bracket
11	Stainless Steel Housing
12	Switch Bracket
13	Electronic Switch
14	Aluminum Filter
15	LED Light



Charcoal Filters (Set)
For Use With Recirculating Vent



881-2802

Charcoal Filters (Set)

* For Use With Recirculating Vent



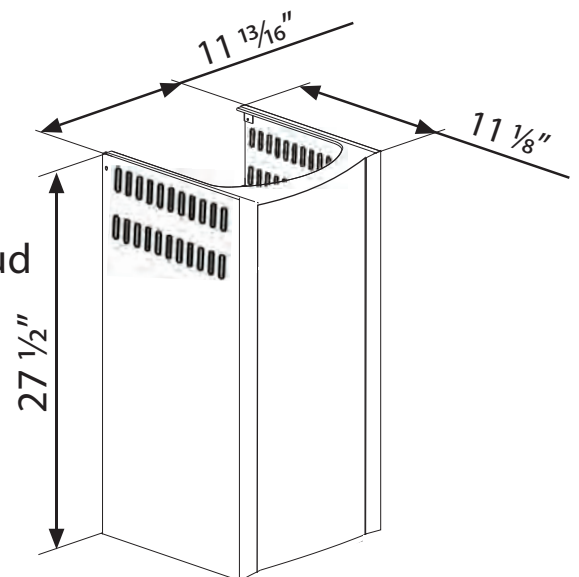
812-5839

Range Hood Extension

Dimension - $11\frac{13}{16}$ " W x $11\frac{1}{8}$ " D x $27\frac{1}{2}$ "

For Use with Range Hoods 812-0611 & 812-0612

Extension Fits 9' Ceiling and Replaces Inner Shroud
Included with 812-0611 or 812-0612





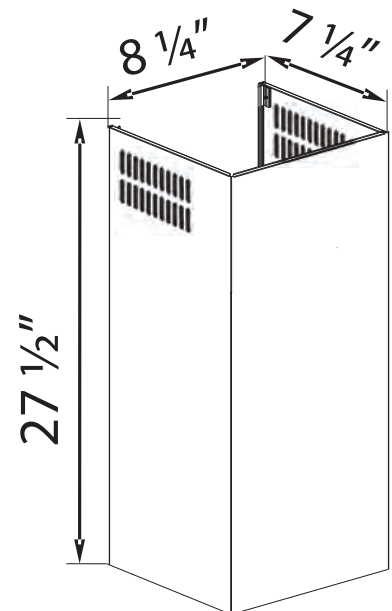
812-5840

Range Hood Extension

Dimension - 8 $\frac{1}{4}$ "W x 7 $\frac{1}{4}$ " D x 27 $\frac{1}{2}$ "

For Use with Range Hoods 812-0617 & 812-0618

Extension Fits 9' Ceiling and Replaces Inner Shroud
Included with 812-0617 or 812-0618





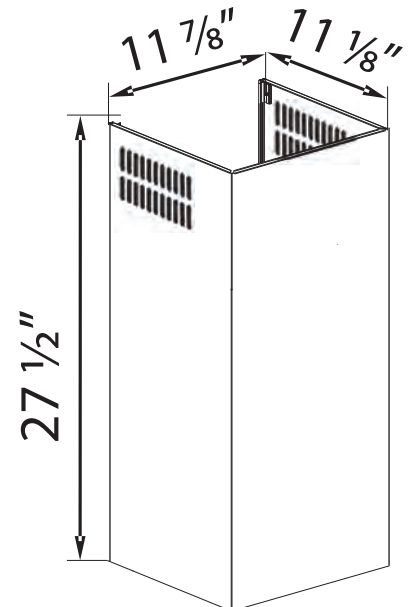
812-5847

Range Hood Extension

Dimension - $11\frac{7}{8}$ "W x $11\frac{7}{8}$ " D x $27\frac{1}{2}$ "

For Use with Range Hoods 812-0613 & 812-0614

Extension Fits 9' Ceiling and Replaces Inner Shroud
Included with 812-0613 or 812-0614





FULL ONE YEAR WARRANTY

Truvent warrants that the parts and assemblies of this product will be free from defects in material and workmanship under normal household use for 1 year from date of purchase. Truvent will replace any parts of your range hood (except light bulbs and filters) which are defective in materials or workmanship. This warranty covers the original purchaser with original receipt only and does not include business, commercial or industrial use of this product. Our responsibility under this warranty is limited only to the replacement of parts and no other costs. Truvent will, at its discretion, provide replacement parts for installation by consumer for any parts that prove defective under normal usage and service with new or equivalent parts.

TRUVENT WILL NOT PAY FOR

- A. Improper installation or use, delivery or maintenance.
- B. Damage caused after delivery.
- C. Any labor costs incidental to the replacement of defective parts.
- D. Consumable parts such as light bulbs and filters.
- E. Service calls to:
 - 1. Correct the installation of the range hood.
 - 2. Instruct you how to use the range hood.
 - 3. Replace house fuses or correct house wiring.
- F. Repairs when range hood is used in other than normal, single-family household use.
- G. Pickup and delivery. This product is designed to be repaired in the home.
- H. Damage to range hood caused by accident, negligence, misuse, fire, flood, act of God or use of products not approved by Truvent.

TRUVENT AND COMPASS MANUFACTURING INTERNATIONAL DO NOT ASSUME ANY RESPONSIBILITY FOR INCIDENTAL OR CONSEQUENTIAL DAMAGES. Some states or provinces do not allow the exclusion or limitation of incidental or consequential damages, so this exclusion or limitation may not apply to you.

This warranty gives you specific legal rights, and you may also have other rights which may vary from state to state or province to province.

Outside the United States and Canada, a different warranty may apply. For details, please contact your authorized Truvent dealer.

Should a malfunction occur within the time covered by this warranty, replacement parts may be obtained from Customer Service Department 800.626.3525 or email warranty@cmiproduct.com.