

# Installation

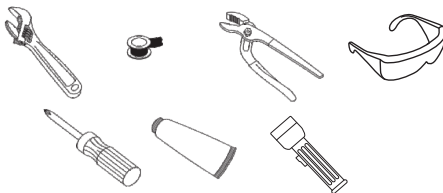
For Models: 892-7525,  
892-7526, 892-7527,  
892-7528, 892-7529

Easy Install Lift Rod Pop-Up with  
"Drain Safeguard"



## Tools

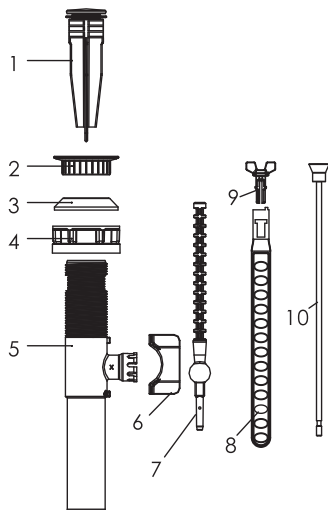
- Adjustable Wrench (2)
- Teflon Tape
- Groove Joint Pliers
- Phillips Screwdriver
- Silicone Sealant
- Flashlight
- Safety Glasses



## Need Help

Have a question? DON'T GO BACK TO THE STORE. WE CAN HELP. Just call 1-800-626-3525, 8 a.m. to 5 p.m. EST Monday-Friday. Or send an email to [Help@cmiproduct.com](mailto:Help@cmiproduct.com).

## Parts Diagram / List



No.	Part Name
1	Stopper
2	Threaded End
3	Washer
4	Lock Nut
5	Pop-up Body
6	Ball Nut
7	Ball Rod
8	Lift Rod Strap
9	Button
10	Lift Rod

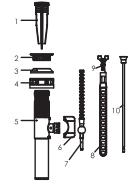
## 5 Year Limited Warranty

The manufacturer warrants that the parts and assemblies of this product will be free from defects in material and workmanship under normal household use for 5 years as it is owned by the original consumer purchaser.

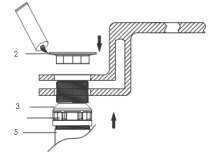
This warranty covers the original purchaser with original receipt only and does not include business, commercial, or industrial use of this product. This warranty shall not apply to goods which have been subject to accidents, negligence, or improper installation. Our responsibility under this warranty is limited only to the replacement of parts and no other costs. Should a malfunction occur within the time covered by this warranty, replacement parts may be obtained from Customer Service Department 1-800-626-3525 or email [warranty@cmiproduct.com](mailto:warranty@cmiproduct.com). The manufacturer will, at its discretion, provide replacement parts for installation by consumer for any parts that prove defective under normal usage and care with new or equivalent parts.

# Installation Instructions

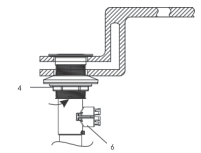
1. Remove the old drain assembly. Clean the surface to remove the old adhesive and dirt before installing the new drain. Dry the area thoroughly.



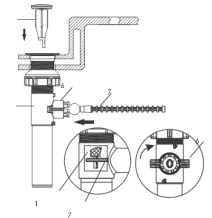
2. Remove the stopper (#1), the threaded end (#2) and washer (#3).  
**Note:** Before installation, verify there is no damage to the pop-up body (#5) or the threaded end (#2). If there is damage, please call customer service for a replacement. Do NOT install damaged parts.



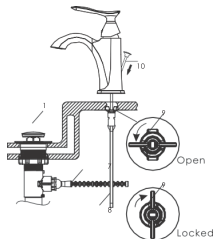
3. Place a ring of silicone sealant around the threaded end (#2) or the drain opening of the sink. Verify the washer (#3) and lock nut (#4) are on the pop-up body (#5). Insert the pop-up body (#5) into the drain hole from underneath and screw the threaded end (#2) to the pop-up body (#5).



4. Verify the ball nut (#6) is pointed straight back to the lift rod (#10) location. Tighten the lock nut (#4) firmly against the base of the sink to ensure a tight seal.



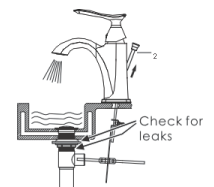
5. Insert the stopper (#1) into the pop-up body (#5). Verify the hole in the stopper (#1) falls towards the ball nut (#6). Insert the ball rod (#7) through the hole in the stopper (#1). See the diagram for visual.



6. Insert the lift rod (#10) through the hole on the faucet. From underneath the sink, turn the button (#9) counterclockwise and insert lift rod (#10) into the button (#9). Turn the button (#9) clockwise to lock. Next insert the lift rod strap (#8) into a hole on the ball rod (#7).

**Note:** Ensure there is enough room to move the lift rod (#10) up and down the fully open and close the stopper (#1). Remove the lift rod strap (#8) from the ball rod (#7) and choose a different hole to make adjustments as needed.

7. Close the drain and fill the sink with water. Check for leaks. If water is leaking from the drain, refer to step 5 or 6 to tighten the washer (#3) and lock nut (#4).



01/07/2022

Have a question? DON'T GO BACK TO THE STORE. WE CAN HELP.  
Just call 1-800-626-3525, 8 a.m. to 5 p.m. EST Monday-Friday.  
Or send an email to [Help@cmiproduct.com](mailto:Help@cmiproduct.com).