

Installation

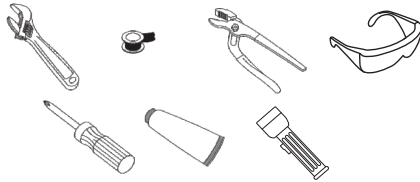
For Models: 892-7530,
892-7531, 892-7532,
892-7533, 892-7534
892-8300

Easy-Clean Push Style
Pop-Up Drain with
"Drain Safeguard"



Tools

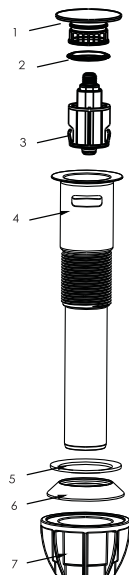
- Adjustable Wrench (2)
- Teflon Tape
- Groove Joint Pliers
- Phillips Screwdriver
- Silicone Sealant
- Flashlight
- Safety Glasses



Need Help

Have a question? DON'T GO BACK TO THE STORE. WE CAN HELP.
Just call 1-800-626-3525, 8 a.m. to 5 p.m. EST Monday-Friday.
Or send an email to Help@cmiproduct.com.

Parts Diagram / List



No.	Part Name
1	Cover
2	Washer
3	Stopper Core
4	Stopper Housing
5	Small Washer
6	Large Washer
7	Lock Nut

5 Year Limited Warranty

The manufacturer warrants that the parts and assemblies of this product will be free from defects in material and workmanship under normal household use for 5 years as it is owned by the original consumer purchaser.

This warranty covers the original purchaser with original receipt only and does not include business, commercial, or industrial use of this product. This warranty shall not apply to goods which have been subject to accidents, negligence, or improper installation. Our responsibility under this warranty is limited only to the replacement of parts and no other costs. Should a malfunction occur within the time covered by this warranty, replacement parts may be obtained from Customer Service Department 1-800-626-3525 or email warranty@cmiproduct.com. The manufacturer will, at its discretion, provide replacement parts for installation by consumer for any parts that prove defective under normal usage and care with new or equivalent parts.

Installation Instructions

1. Remove the lock nut (#7), large washer (#6), and small washer (#5) from the stopper housing (#4).

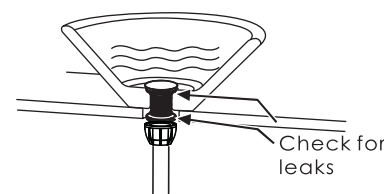
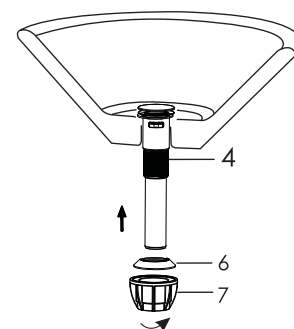
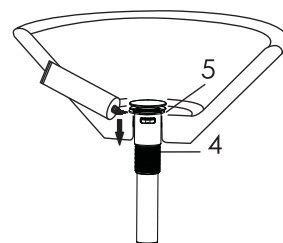
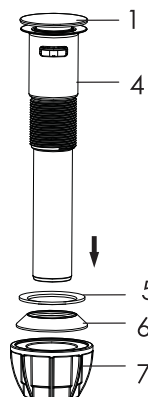
Please Note: Before installation, verify there is no damage to the drain. If there is damage, call customer service for a replacement. Do NOT install damaged parts.

2. Remove the old drain assembly. Clean the surface to remove the old adhesive and dirt before installing the new drain. Dry the area thoroughly.

3. Place a ring of silicone sealant around the small washer (#5) on the stopper housing (#4) or the drain opening of the sink. Insert the stopper housing (#4) into the drain hole from the top.

4. From underneath the sink, slide the large washer (#6) onto the stopper housing (#4), then screw on the lock nut (#7) hand tight. Do not over tighten. See the diagram for a visual. Please continue to complete the drain installation.

5. Close the drain and fill the sink with water. Check for leaks. If water is leaking from the drain, refer to steps 1-4 or tighten the area where the leak is occurring.



01/07/2022

Have a question? DON'T GO BACK TO THE STORE. WE CAN HELP.
Just call 1-800-626-3525, 8 a.m. to 5 p.m. EST Monday-Friday.
Or send an email to Help@cmiproduct.com.