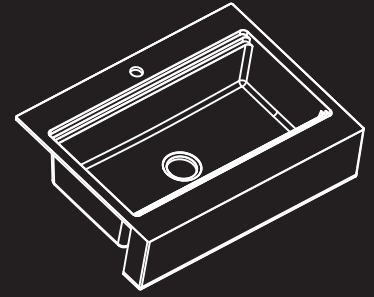


Granite Composite Retrofit Work Station Kitchen Sink Installation Instructions

— For Top Mount Use Only —



FOR EXPERIENCED AND PROFESSIONAL INSTALLATION ONLY

This installation project is designed for an advanced skill level.

Carton Includes: Work Station Sink, Colander, Drying Rack, Sink Grid, Cutting Board, Fasteners, 1-1/2" (38 mm) hole saw and Installation Instructions.

IMPORTANT! The countertop must be flat. This sink will not install to countertops with integral drip edges.

*Your countertop thickness cannot exceed 1-1/2" (38 mm).

*Your countertop cannot overhang the cabinet face more than 1-1/2" (38 mm).

*Your countertop must be fully supported by the cabinet.

*Proper installation requires a coordinated effort including advanced dialog between the designer (or customer), the cabinet maker, the countertop fabricator and the sink installer during the design and installation phase.

***BEFORE INSTALLING THE SINK, INSPECT IT FOR DAMAGE. DO NOT INSTALL A DAMAGED UNIT.**

* These instructions provide 2 different installation methods: new countertop installation and replacement.

Follow the instructions that apply to your installation method.

* Inspect the drain and supply lines; replace if necessary.

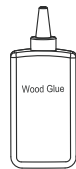
*** Remember it is your responsibility to follow all local plumbing and building codes.**

The warranty will be voided if these installation instructions are not followed.

Tools Needed



Tape Measure



Waterproof Wood Glue



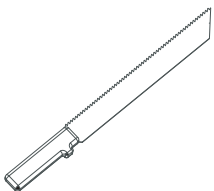
Safety Glasses



Painter's Tape



Felt-tip Marker



Laminate Jigsaw Blade



Scissors



Saw



Sandpaper



Silicone Sealant



Utility Knife



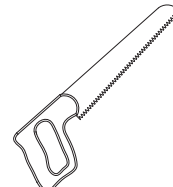
Level



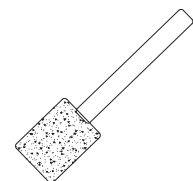
Flat Screwdriver



Square

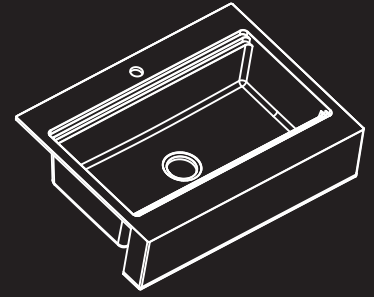


Hand Wood Saw



Foam-Brush

Granite Composite Retrofit Work Station Kitchen Sink Installation Instructions



Before You Start

Please complete this check list.

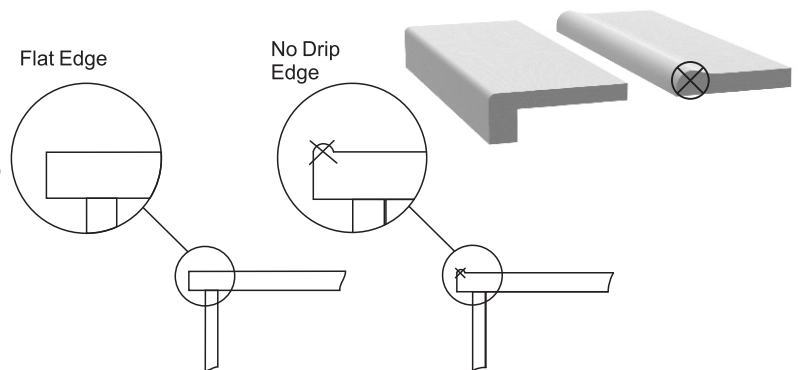
This sheet is designed to assist you in making an informed decision on the selection of your retrofit apron front farm sink. Please answer the following questions to determine whether your current kitchen cabinet can use this style of sink.

1) Is your countertop flat?

The countertop must be flat to assure a proper installation.

Please Note – Countertops with a “No Drip” edge will not work with this sink application.

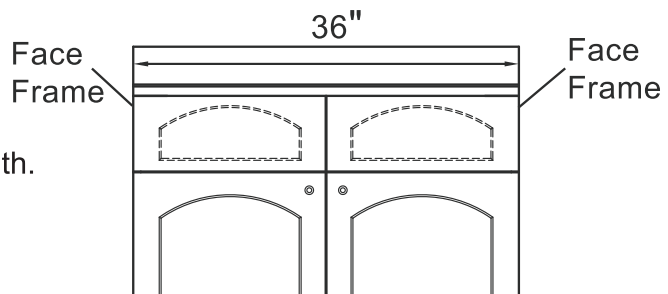
YES NO



2) Is your sink base cabinet 36" wide?

Measure the face frame from the left to the right on your sink base to determine the width.

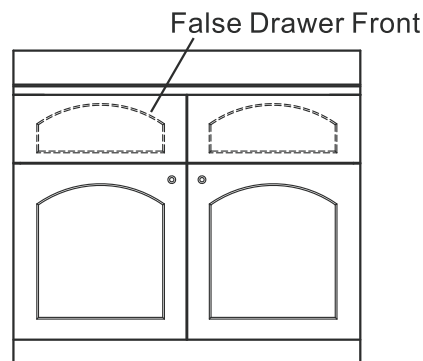
YES NO



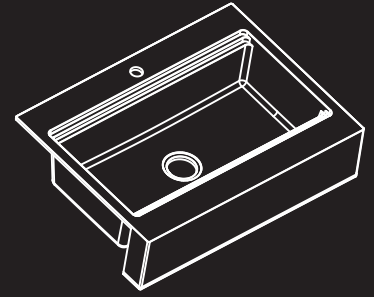
3) Does your cabinet have false drawer fronts?

(Can be one or two false drawer front)

YES NO



Granite Composite Retrofit Work Station Kitchen Sink Installation Instructions

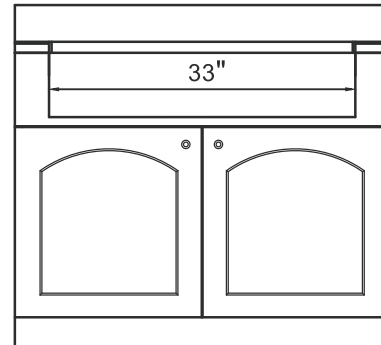


4) Is the dimension between the cabinet stiles 33"?

This measurement is the open space from left to right when the false drawer front is removed.

Typically, this distance can be measured from the inside of the cabinet without removing the false drawer fronts.

YES NO



5) Measure the distance from the top of the door rail to the top of the cabinet.

Add 1-1/2" to the measurement to account for the countertop height.

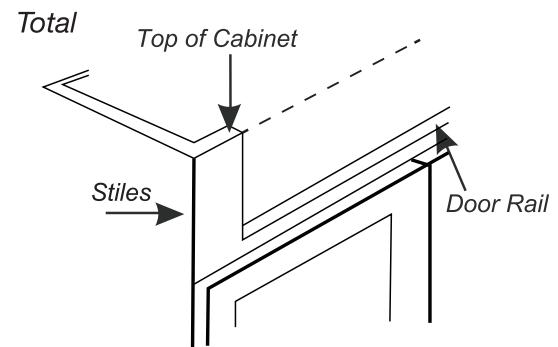
Typically this distance can be measured from the inside of the cabinet.

Total
7- 1/2" = Flat apron Front

Please Note – a 7 1/2" Flat Front sink can be used for a larger opening by furring out the gap (furring strip not included).

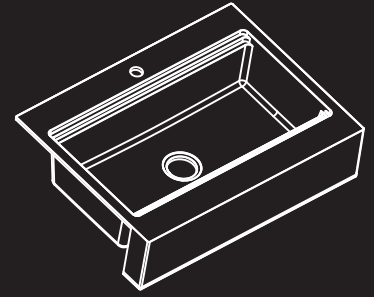
Measurement

Measurement + 1-1/2"



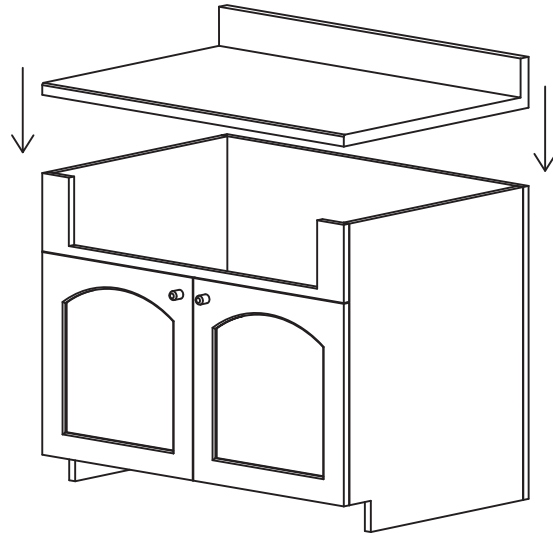
If you answered yes to these questions you can choose the Granite Retrofit Apron Front Work Station sink for your kitchen.

Granite Composite Retrofit Work Station Kitchen Sink Installation Instructions



1. Prepare the Cabinet - Replacement of an Existing Sink

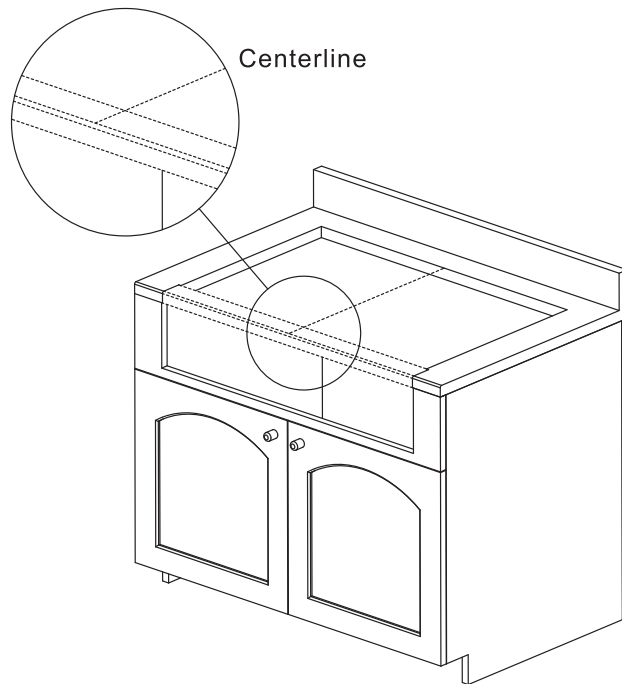
- Please remove the false fronts (two small or one large panel) please be careful not to damage the cabinet front.
- Apply painter's tape to the cabinet front, this will help prevent damaging the surface when cutting out the drawer fronts.
- If the cabinet has a center support (if you have two smaller false fronts you will have a center support) please remove it at this time. Cut along the bottom even with the drawer opening making sure you do not cut into the cabinet.
- Please remove the top rail, being careful not to cut into the cabinet stiles.



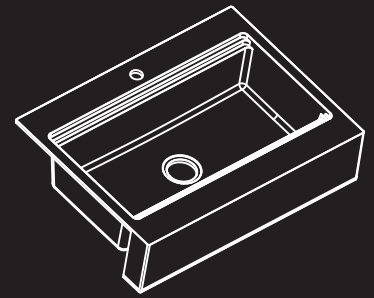
2. Preparing Your Countertop

If you have a New Countertop Installation please refer to page 9.

- Put the painter's tape at the centerline of the cabinet from the backsplash to the front edge of the countertop.
- Put the painter's tape across the front edge of the countertop along the entire width of the sink base cabinet.
- Mark the centerline of the cabinet onto the painter's tape.

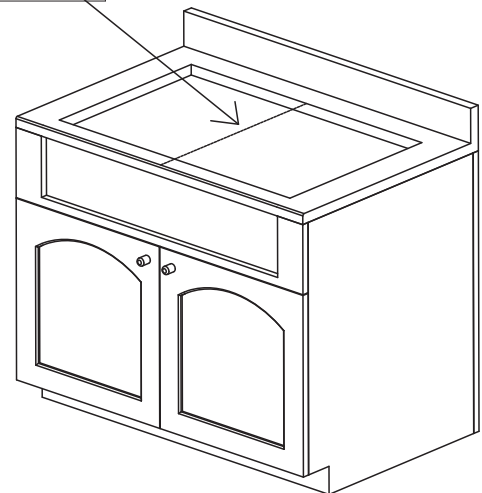
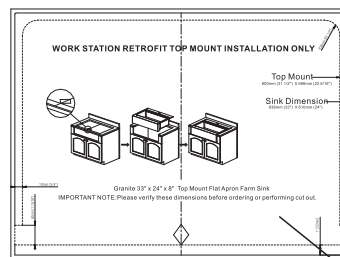


Granite Composite Retrofit Work Station Kitchen Sink Installation Instructions

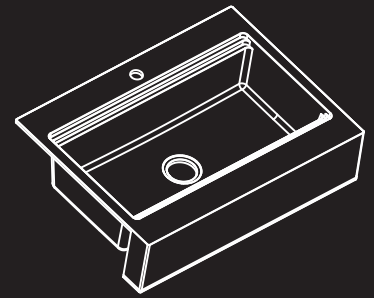


3. Trace the Template

- Cut out the paper template along the top mount marked line.
- Cut out the diamond on the template this will help you line up the centerline, it should be in the center of the diamond.
- Please put painter's tape to all exposed outside edges prior to securing the template in place. This will help prevent chipping when cutting.
- Put the template on the countertop. Line up the template with the lines marked on the painter's tape over the pre-existing hole.
- Mark the 2 notches from the template 1-15/16" from the edge of the countertop.
- Tape the template in place.
- Trace the template on the applied painter's tape.
- Trace the notches at the front of the template.
- Remove the template
- Put painter's tape to the front of the countertop to prevent chipping the laminate when cutting.
- Extend the marked lines down the front of the countertop onto the painter's tape.



Granite Composite Retrofit Work Station Kitchen Sink Installation Instructions



4. Cut the Countertop

IMPORTANT! To avoid damage to the cabinet surfaces, cut the countertop in the order of the steps below.

NOTE: If your existing sink hole is set back close to the backsplash you will need to adjust the depth of the notch.

This will allow you to slide the sink back further to get a tight fit.

TIP: To prevent chipping the laminate, put painter's tape to the edge of the countertop before cutting.

TIP: Make sure your equipment is in good working order and your blades are sharp to ensure a smooth installation and straight cuts.

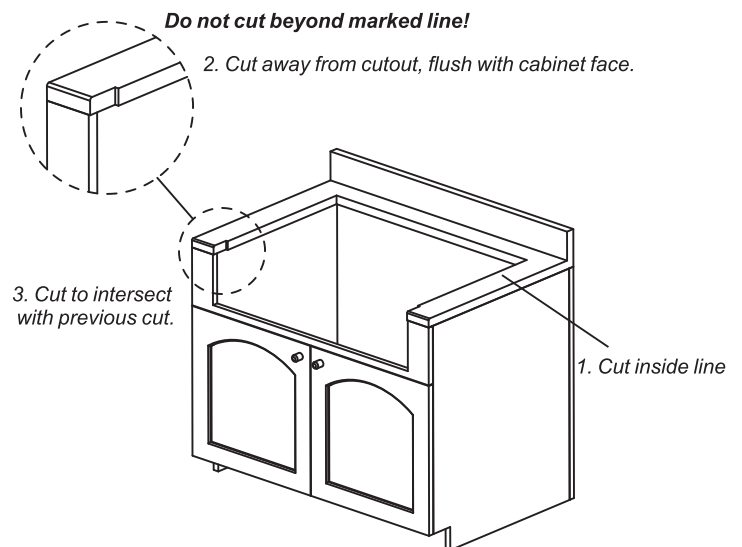
1. Using the laminate saw blade cut the countertop along the inside marked line.
2. Carefully cut away from the cutout to the end of the marked line. Be careful not to damage the cabinet face. Repeat this step on the other side.
3. Carefully cut the marked notch out, cut in from the edge of the countertop and intersect it with the marked notch. Be careful not to damage the cabinet face. Repeat this step on the other side.

TIP: Please use sand paper to smooth all cut edges.

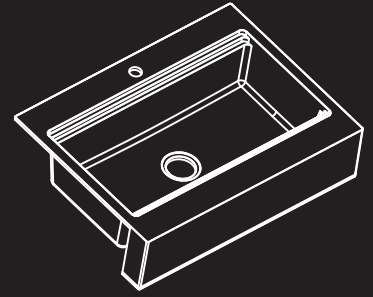
- Lower the sink carefully into the countertop opening to make sure it fits, do not force it. The fit will be tight. If the opening is too small please recheck your dimensions.

4. Very Important - Spread a generous amount of waterproof wood glue on both notches to seal the newly exposed wood. This will help to make this area water resistant and keep water from penetrating into the wood and swelling the underlayment. Please wipe away any excess glue.

TIP: Please wipe away any excess glue.
Please allow the wood glue to dry completely.



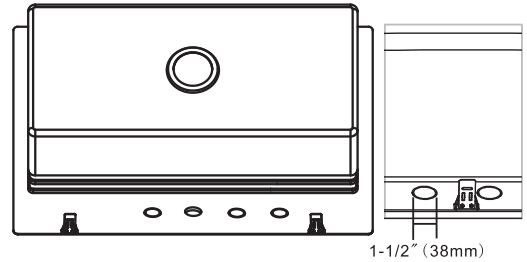
Granite Composite Retrofit Work Station Kitchen Sink Installation Instructions



5. Faucet Hole Drillings

Step 1

Factory has pre-scored additional faucet holes (3) on the bottom of sink.

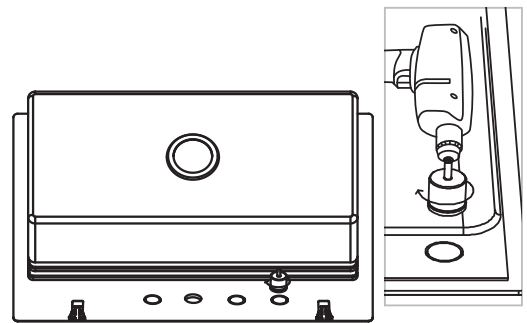


Step 2

Factory has included a 1-1/2" (38mm) hole saw.

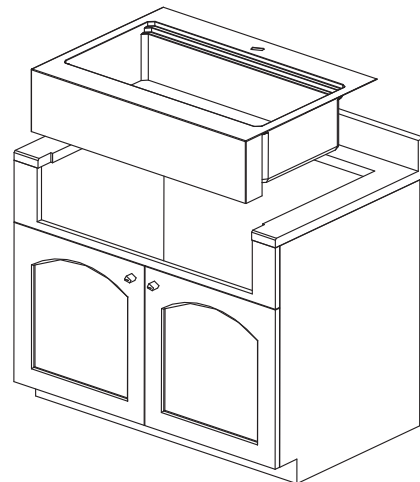
Step 3

Using the hole saw provided, drill from the bottom of the sink using the hole saw to make the additional holes desired.

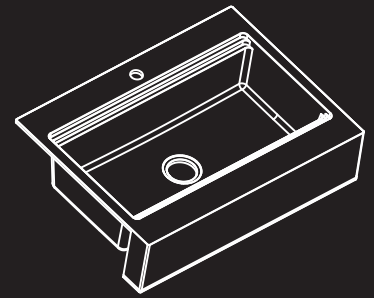


6. Install the Sink

- Please be sure to drill out any other holes needed for your faucet before installing the sink. Please use the 1-1/2" (38mm) hole saw provided to do this.
- To protect the cabinet finish, temporarily apply painter's tape around the cabinet cutout.
- Apply a bead of silicone around the cutout.
- Carefully lower the sink into the cabinet.
- Be sure to wipe away any excess silicone sealant.

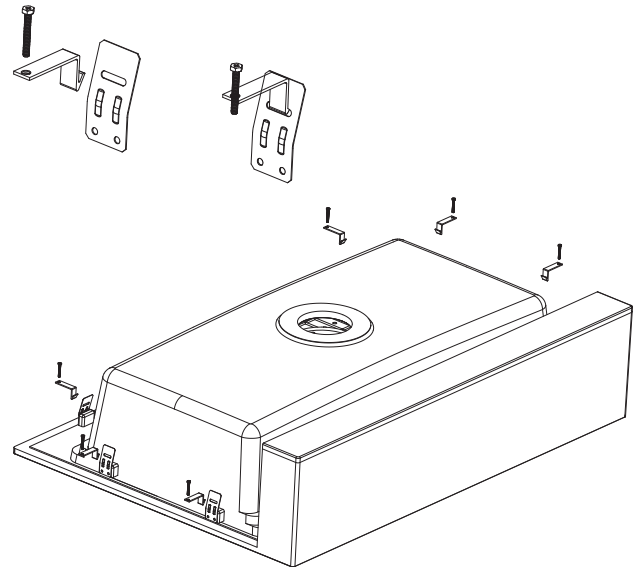


Granite Composite Retrofit Work Station Kitchen Sink Installation Instructions



7. Install the clips from under the cabinet.

- Slide three clips into either side of the back rail of the sink.
- Slide two clips into each side rail of the sink.
- Assemble the screws into the L-clip and bracket as shown.



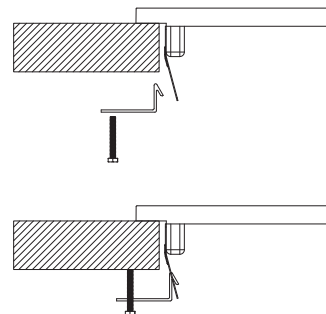
NOTE: Screws are designed to insert into the channel fasteners with backward threading, so that when mounting they will turn in a counter-clockwise direction.

- Locate the fasteners in the position as shown.
- Hand tighten each L-clip bracket to the predetermined mounts.

A. Position the fasteners claw under the top edge as shown.
Locate the fastener in position as shown.
Caution: Improper tightening of channel fasteners could result in improper installation or cause damage to sink.

B. Re-check sinks position on countertop.

C. Tighten all channel fasteners an additional quarter turn with a flat head screwdriver.



IMPORTANT! DO NOT OVERTIGHTEN.

8. Finishing the Installation

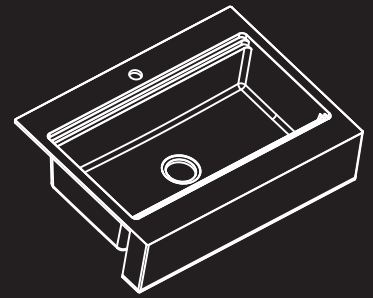
- Apply silicone sealant around the edge of the sink, be sure to completely cover the notched area where the countertop meets the apron front sink.

- Wipe away excess before it dries.

- Install the faucet and drain per manufacturer's installation instructions.

Note: To add a finishing touch to your new sink you can add a furring strip around the apron.
(please check to make sure the cabinet doors have clearance to accept a furring strip.)

Granite Composite Retrofit Work Station Kitchen Sink Installation Instructions



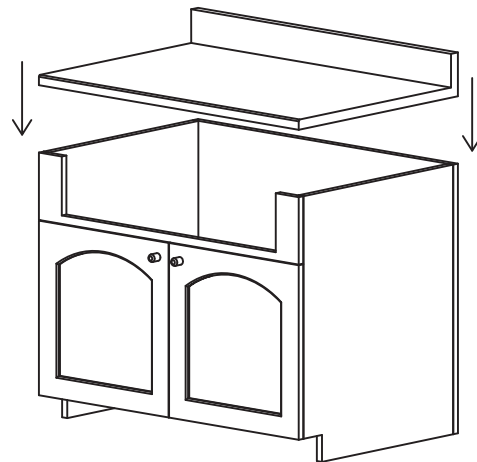
1. Prepare the cabinet - New Countertop Installation

- Please remove the false fronts (two small or one large panel) please be careful not to damage the cabinet front.

- Apply painter's tape to the cabinet front, this will help prevent damaging the surface when cutting out the drawer fronts.

- If the cabinet has a center support (if you have two smaller false fronts you will have a center support) please remove it at this time. Cut along the bottom even with the drawer opening making sure you do not cut into the cabinet.

- Please remove the top rail, being careful not to cut into the cabinet stiles.



2. New Countertop Installation

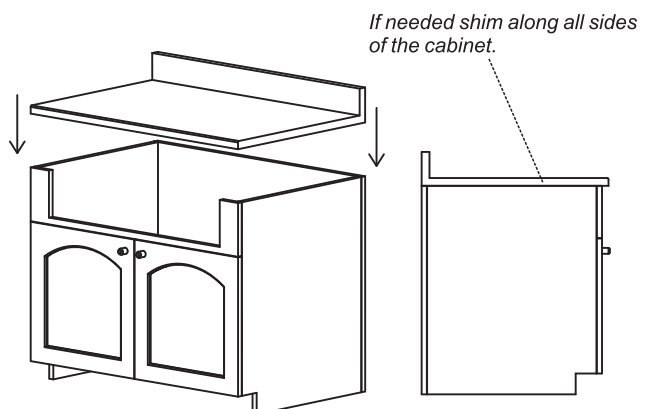
It is very important that you check to make sure your countertop is compatible with this retrofit apron front farm sink.

Your countertop thickness cannot exceed 1-1/2" (38mm)

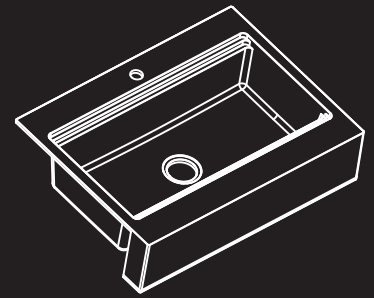
Your countertop cannot overhang the cabinet face more than 1-1/2" (38mm).

Your countertop must be fully supported by the cabinet. If it is not please shim the countertop as needed. Ensure the countertop is fully supported along the entire depth of the cabinet.

- Install the countertop per the manufacturer's instructions

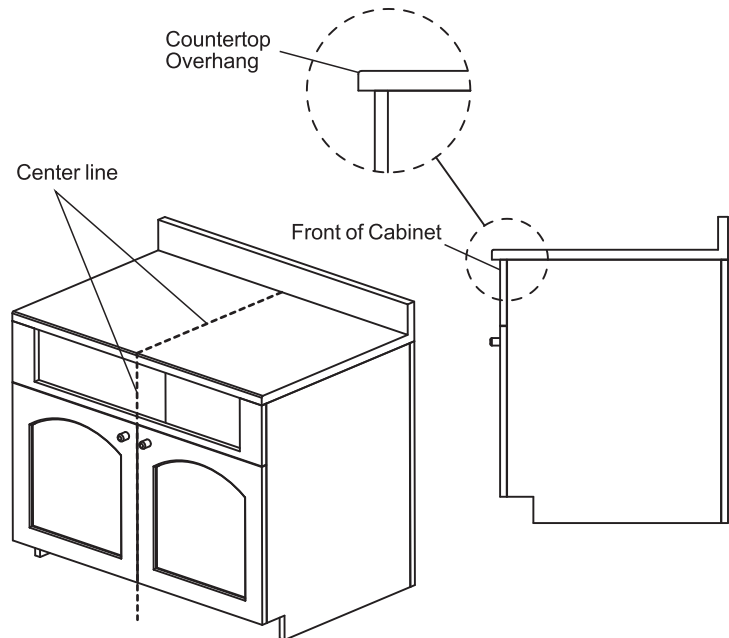


Granite Composite Retrofit Work Station Kitchen Sink Installation Instructions



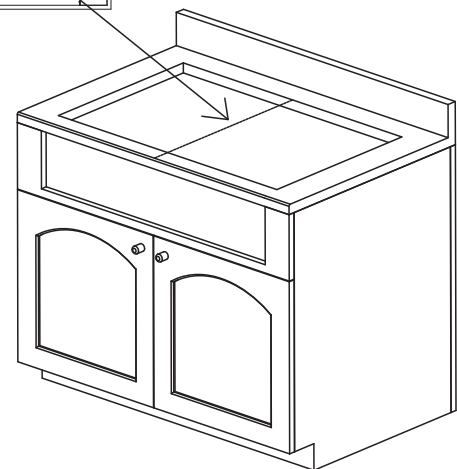
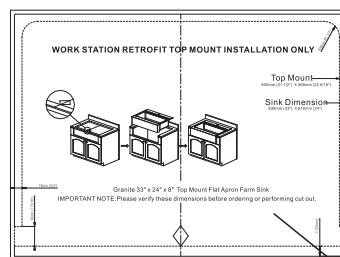
3. Preparing Your Countertop

- Put the painter's tape at the centerline of the cabinet from the backsplash to the front edge of the countertop.
- Put the painter's tape across the front edge of the countertop along the entire width of the sink base cabinet.
- Mark the centerline of the cabinet onto the painter's tape.

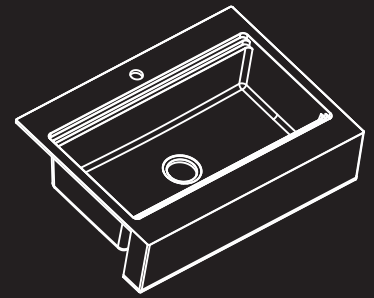


4. Trace the Template

- Cut out the paper template along the Top Mount marked line.
- Cut out the diamond on the template this will help you line up the centerline, it should be in the center of the diamond.
- Please put painter's tape to all exposed outside edges prior to securing the template in place. This will prevent chipping when cutting.
- Put the template on the countertop. Align the template with the lines marked on the painter's tape.
- Mark the 2 notches from the template 1-15/16" from the edge of the countertop.
- Tape the template in place.
- Trace the template on to the painter's tape.
- Trace the notches at the front of the template.
- Remove the template
- Put painter's tape to the front of the countertop to prevent chipping the laminate when cutting.
- Extend the marked lines down the front of the countertop onto the painter's tape.



Granite Composite Retrofit Work Station Kitchen Sink Installation Instructions



5. Cut the Countertop

IMPORTANT! To avoid damage to the cabinet surfaces, cut the countertop in the order of the steps below.

TIP: To prevent chipping the laminate, put painter's tape to the edge of the countertop before cutting.

TIP: Make sure your equipment is in good working order and your blades are sharp to ensure a smooth installation and straight cuts.

1. Using the laminate saw blade cut the countertop along the inside marked line.
2. Carefully cut away from the cutout to the marked notch line. Be careful not to damage the cabinet face. Repeat this step on the other side.
3. Carefully cut in from the edge of the countertop to intersect with the previous cut. Be careful not to damage the cabinet face.

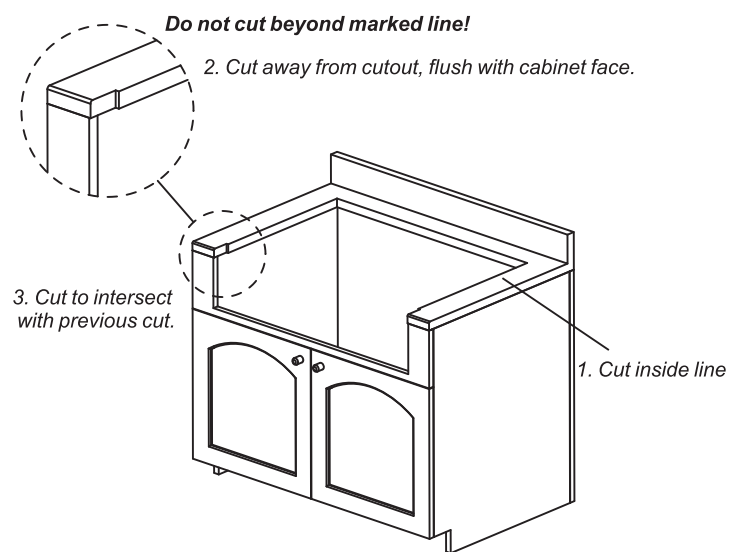
Repeat this step on the other side.

TIP: Please use sand paper to smooth all cut edges.

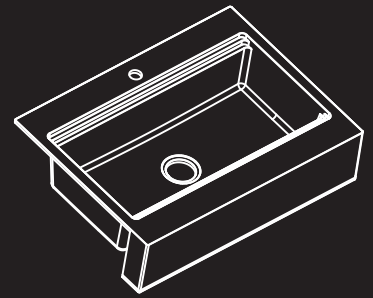
- Lower the sink carefully into the countertop opening to make sure it fits, do not force it. The fit will be tight. If the opening is too small please recheck your dimensions.

4. Very Important - Spread a generous amount of waterproof wood glue on both notches to seal the newly exposed wood. This will help to make this area water resistant and keep water from penetrating into the wood and swelling the underlayment. Please wipe away any excess glue.

TIP: Please wipe away any excess glue.
Please allow the wood glue to dry completely.



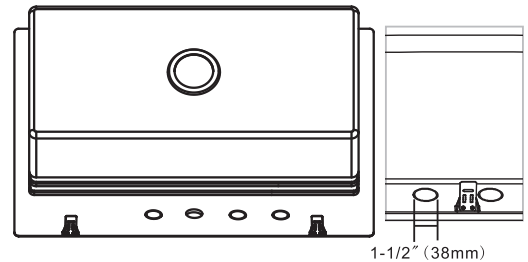
Granite Composite Retrofit Work Station Kitchen Sink Installation Instructions



6. Faucet Hole Drillings

Step 1

Factory has pre-scored additional faucet holes (3) on the bottom of sink.

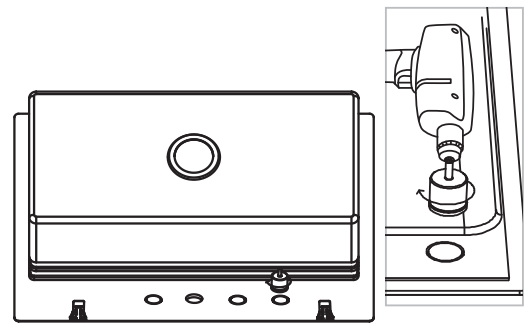


Step 2

Factory has included a 1-1/2" (38mm) hole saw.

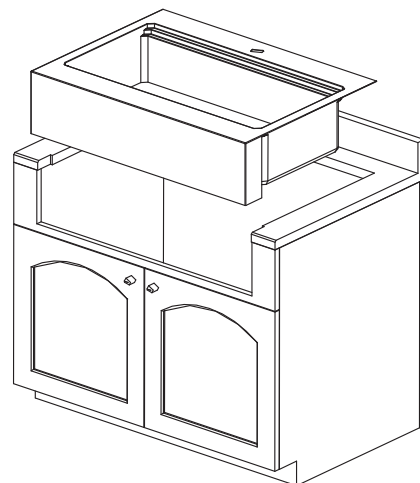
Step 3

Using the hole saw provided, drill from the bottom of the sink using the hole saw to make the additional holes desired.

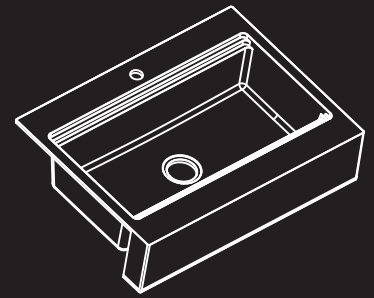


7. Install the Sink

- Please be sure to drill out any other holes needed for your faucet before installing the sink. Please use the 1-1/2" (38mm) hole saw provided to do this.
- To protect the cabinet finish, temporarily apply painter's tape around the cabinet cutout.
- Apply a bead of silicone around the cutout.
- Carefully lower the sink into the cabinet.
- Be sure to wipe away any excess silicone sealant.



Granite Composite Retrofit Work Station Kitchen Sink Installation Instructions



8. Install the clips from under the cabinet

- Slide three clips into either side of the back rail of the sink.
- Slide two clips into each side rail of the sink.
- Assemble the screws into the L-clip and bracket as shown.

NOTE: Screws are designed to insert into the channel fasteners with backward threading, so that when mounting they will turn in a counter-clockwise direction.

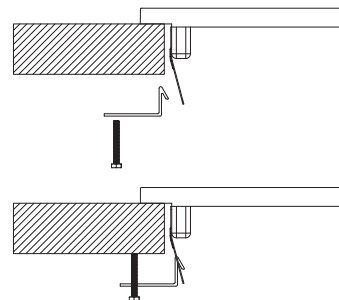
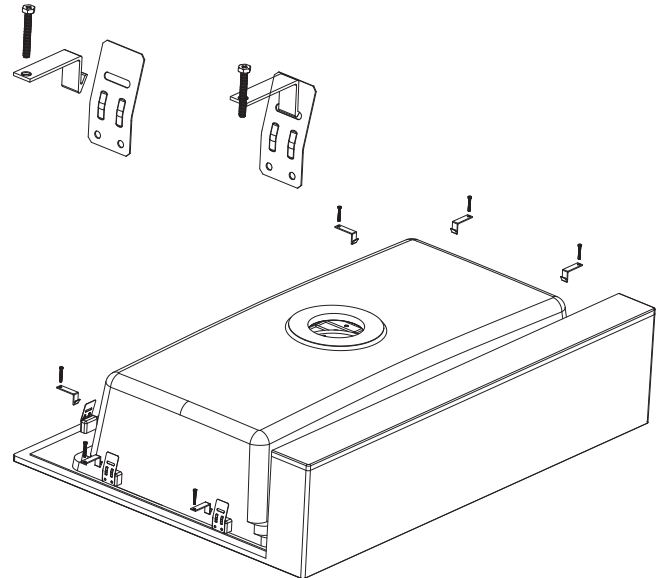
- Locate the fasteners in the position as shown.
- Hand tighten each L-clip bracket to the predetermined mounts.

Position the fasteners claw under the top edge as shown.
Locate the fastener in position as shown.

CAUTION: Improper tightening of channel fasteners could result in improper installation or cause damage to sink.

- Re-check sinks position on countertop.
- Tighten all channel fasteners an additional quarter turn with a flat head screwdriver.

IMPORTANT! DO NOT OVERTIGHTEN.



9. Finishing the Installation

- Apply silicone sealant around the edge of the sink, be sure to completely cover the notched area where the countertop meets the apron front sink.
- Wipe away excess before it dries.
- Install the faucet and drain per the manufacturer's installation instructions.

NOTE: To add a finishing touch to your new sink you can add a furring strip around the apron (please check to make sure the cabinet doors have clearance to accept a furring strip)

Granite Composite Kitchen Sinks Care And Cleaning

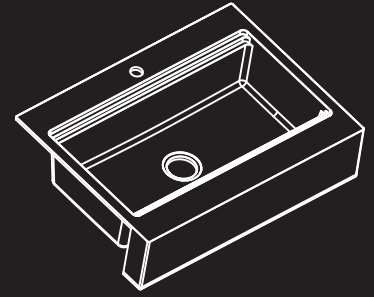
NOTE: Clean sink before first use.

- *Wash sink with warm water and wipe dry using soft cloth.
- *Use only non abrasive cleaners or detergents on sink.
- *Use only non abrasive cloths, soft sponge, (Magic Eraser) etc.

HINT: Rinse and dry surface with a soft cloth after each use.

Have a question? **DON'T GO BACK TO THE STORE, WE CAN HELP**, just call 1-800-626-3525, 8 a.m. to 5 p.m. EST Monday-Friday, or send an email to Help@cmiproduct.com.

Granite Composite Retrofit Work Station Kitchen Sink Installation Instructions



Compass Manufacturing International Limited One Year Granite Composite Kitchen Sink Warranty

Compass Manufacturing International warrants to the original purchaser of a Compass Manufacturing International granite composite kitchen sink that Compass Manufacturing International will, at its option, replace or repair, without charge, such product if it fails due to a manufacturing defect for One Year of normal residential use. Product replacement does not include transportation cost or labor installation cost. This warranty covers only granite composite kitchen sinks installed in a conventional counter-top surface and applies to residential installations only. Compass Manufacturing International reserves the right to examine the product in question and its installation prior to replacement.

Some states do not allow the exclusion or limitation of incidental or consequential damages or limitations on how long an implied warranty lasts, so the above limitations or exclusions may not apply to you.

This Warranty gives you specific legal rights, and you may also have other rights which vary from state to state.

To Obtain Service Under Warranty

1. Write to: Compass Manufacturing International

6702 ENTERPRISE DRIVE, LOUISVILLE, KY 40214

TOLL FREE: (800) 626-3525 FAX: (502) 361-6956

[HTTP://www.cmiproduct.com](http://www.cmiproduct.com)

2. Include a letter containing the following information:

- a. Date of purchase and installation
- b. Proof of Purchase (Copy of original dated invoice).
- c. Description of nature of defect.
- d. Model number or description of model and/or component part if possible.

Requesting Assistance or Service If you need assistance or service

Call toll-free at **1-800-626-3525**. Our consultants are available to assist you.

When calling: Please know the purchase date, and the complete model of your sink. This information will help us better respond to your request.

Our consultants provide assistance with:

- Features and specifications on our full line of sinks
- Installation information
- Use and maintenance procedures
- Accessory and repair parts sales
- Specialized customer assistance
- Referrals to local dealers, service companies, and repair parts distributors