

Dual Flush Toilet Installation Instructions



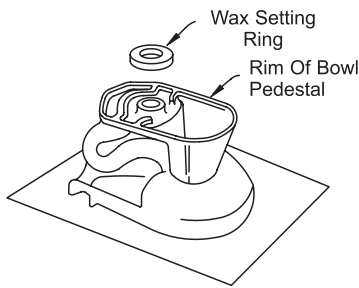
Supplies Not Included: The following items are NOT supplied and will be needed to complete the installation: water supply line, water shut off valve (if replacing), sealant, 2 - closet bolts, wax ring, and toilet seat.

Caution: This toilet is made of fine china that is ruggedly constructed. Rough handling or dropped tools could chip or crack the product. Extra precaution should be taken to reduce the risk.

Prior to Installation: Turn off the toilet supply valve and flush the toilet. If replacing the supply valve, the main water supply will need to be shut off. Sponge out the remaining water from the bowl. Disconnect and remove the water supply line. Remove the mounting bolt nuts and washers, then lift the toilet from the flange. Plug the waste opening to prevent sewer gas from escaping. Clean the old wax from the flange and thoroughly clean the surrounding floor. A 4-inch drain with a slotted toilet flange will need to be installed prior to new toilet installation.

Installing the Toilet Bowl and Tank

1



Clean the immediate floor area thoroughly. Insert the new toilet bolts in the slotted flange, bolt heads down. The toilet bowl should be placed on the floor upside down, on a soft material to prevent scratching. Place the wax ring evenly around waste flange (horn), with tapered end of the ring facing the toilet. Apply a thin bead of sealant around the toilet base.

2

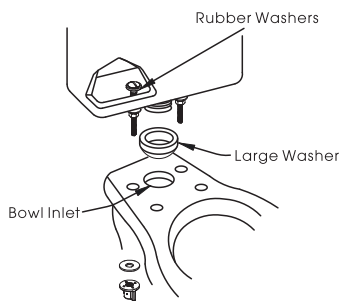


Unplug the floor waste opening. Gently place the bowl, right side up, in position with the mounting bolts protruding through the holes in the toilet base. Press down with slight rocking motion on the top center with your full weight. Make sure the bowl is level. Loosely install the retainer washers and nuts. The side of washers marked "THIS SIDE UP" must face up. After confirming the bowl is level, tighten the nuts evenly and snugly. Install the caps on washers. If necessary, cut the bolt height to size before installing caps. Smooth the bead of sealant around the base. Remove excess sealant.

DO NOT OVERTIGHTEN NUTS, AS VITREOUS CHINA EASILY CHIPS AND CRACKS.

Pour water into the bowl to prevent sewer gas from escaping.

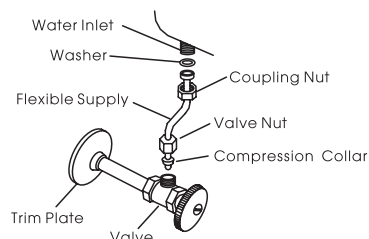
3



Carefully remove the tank and lid. Gently place the tank upside down on a soft material to prevent scratching. Place the large doughnut shaped washer snugly on the threaded tank outlet. Remove the plastic nut and metal washer. Place the tank on the toilet bowl with the large doughnut washer center on the bowl inlet. From underneath, add a metal washer and plastic nut to each bolt leaving loose for adjustments. Verify the tank is parallel to the wall and slightly tighten the plastic nuts alternating back and forth, until the tank is in contact with the bowl piers.

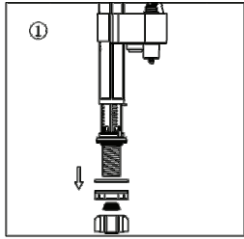
IMPORTANT - DO NOT OVERTIGHTEN NUTS! Over tightening the nuts can cause chips and cracks.

4

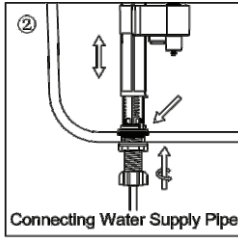


Connect the cold water supply line (not supplied) to the tank with your straight or angled stop. Place the washer, and then attach the plastic nut to the tank water inlet. If necessary, slightly bend the pipe to fit into the inlet hole on the water inlet. Tighten all plastic nuts securely.

5 A. Fill Valve:

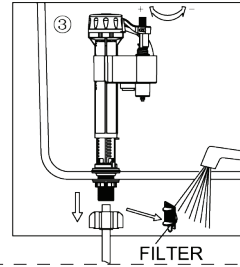


Disassemble the lock nut, coupling nut for valve installation.



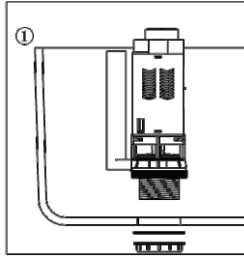
Connecting Water Supply Pipe

Position valve inside tank. Push down on the valve shank (not the top) while tightening lock nut. Screw the valve shank clockwise, and pull the valve body to an expected height.

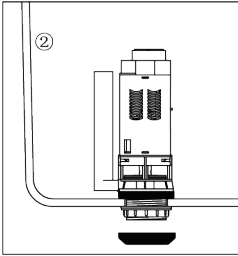


Adjusting water level by screwing float bolt and move the float housing up or down along the valve body to join with the float. Pay attention to the float housing should be attached to the float and the arm isn't raised. Take out of the filter and clean it often.

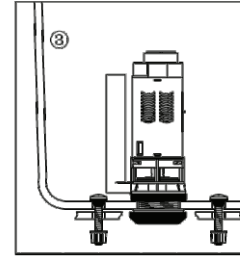
B. Dual Flush Valve:



Disassemble hexagon nut for valve installation. Position the valve inside the tank. Push down on the valve body while tightening the hexagon nut from outside.

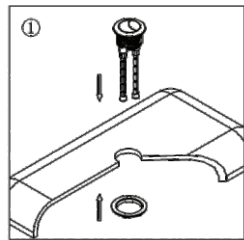


Nest the rubber washer in the lock nut.

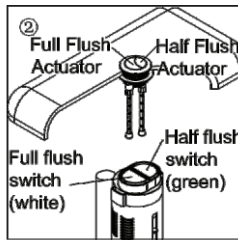


Nest the tank to bowl washer in the lock nut and position the tank on the toilet bowl properly. Disassemble the tank to bowl bolts. Fix the tank to toilet bowl with the tank to bowl bolts tightly.

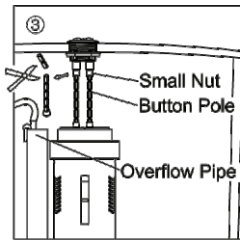
C. Dual Push Button:



Unscrew the lock nut from push button by hand. Insert the push button body into the tank cover hole from outside of tank cover. Then screw the lock nut into the thread of push button from the inner side of tank cover, but keep loose.



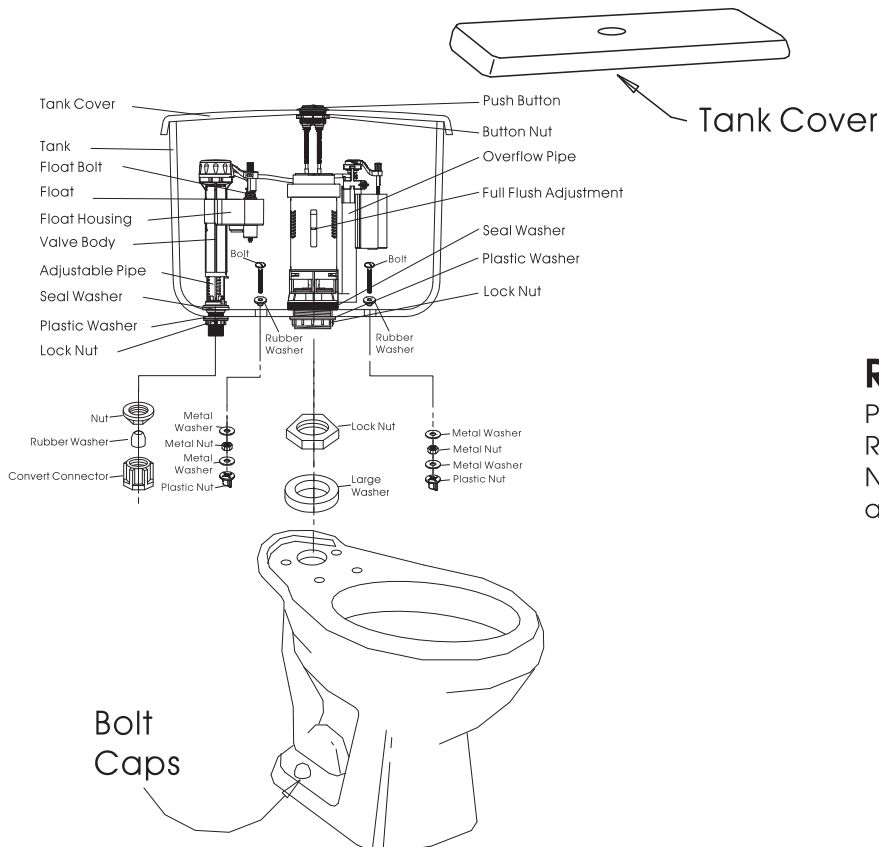
Adjust the push button to assure their poles are in correct direction to the flush valve switch. Then tighten the lock nut.



Loosen the small nuts and adjust the button poles to suitable length. You can cut the button poles if they are too long.

6 Care and Cleaning of Vitreous China

Your new toilet is made of stain, acid and abrasion resistant vitreous china, but like all fine finishes, the china requires reasonable care. For day-to-day cleaning, wash with warm water, a soft cloth, and a mild detergent. On stubborn stains, use one of the powdered detergents, on a damp sponge or scouring pad of nylon, saran, or poly-ethylene. Never use abrasive scouring powders, cleansers, or pads as they tend to create microgrooves that dull the finish and allow dirt to work into the surface. Use if tank cleaning products containing calcium hypochlorite (chlorine) or any other reactive chemical shall constitute improper maintenance.



REPLACEMENT PARTS

Please keep this manual for future reference. Retain product invoice. Record the Model Number of the toilet in this booklet. This will assist when ordering replacement parts.



LIMITED WARRANTY

Vitreous China

Canton Bathware Vitreous China is warranted to the original consumer purchaser to be free from defects in material and workmanship for as long as the original consumer purchaser owns the home in which the toilet was first installed or for 5 years from the date of purchase.

Mechanical Parts

Mechanical parts of the Canton Bathware toilet are warranted to the original consumer purchaser to be free from defects in material and workmanship for 1 year from the date of purchase.

Toilet Care Tip: Over time, hard water deposits may clog toilet rim holes and trapways. To clean, purchase a commercial cleaner that's recommended for the removal of hard water deposits. Follow all instructions on the package.

Canton Bathware will replace, free of charge, during the applicable warranty period, any part or finish that proves defective in material and/or workmanship under normal installation, use and service. Canton Bathware recommends using a professional plumber for all installation and repair. Replacement parts may be obtained by emailing the address below, calling the number below or by writing to:

Compass Manufacturing International
Canton Bathware Product Service
6702 Enterprise Drive
Louisville, KY 40214
800.626.3525
www.cmiproduct.com
warranty@cmiproduct.com
Canton Bathware is a division of Compass Manufacturing International

Vitreous China Product Care

Regular Maintenance:

Remove stains using a cleaning product that contains mild abrasives; rinse and towel dry. Strong abrasive cleaners will scratch and dull the surface. Use toilet bowl cleaners on the inside of the bowl only. Do not use in-tank toilet cleaners as they can damage the flush valve or other working parts and may void the warranty. Wipe any splashes of cleaner solutions from plastic or plated surfaces immediately.

Products to Consider

Comet Bathroom Cleanser
Formula 409 Antibacterial All Purpose

Windex Original
Soft Scrub Original