



## LIMITED LIFETIME WARRANTY

Compass Manufacturing International warrants to the original consumer purchaser that the faucet be free from defects in material and workmanship for as long as the original consumer purchaser owns the home in which the faucet was first installed.

In the event that Freendo faucets are used in a Commercial Application, this warranty is limited for a period of 5 years, unless otherwise specifically stated in the catalog and/or price book.

Compass Manufacturing International will replace, free of charge, during the applicable warranty period, any part or finish that proves defective in material and/or workmanship under normal installation, use and service. This warranty shall not apply to goods which have been subject to accidents, negligence or improper installation. Compass Manufacturing International will not be liable for other damages or losses, including, but not limited to: labor charges and/or damages incurred in installation, repair or replacement as well as any other kind of loss or damage. Proof of purchase from the original consumer purchaser must be made available for all warranty claims.

Compass Manufacturing International recommends using a professional plumber for all installation and repair. Compass Manufacturing International will, at its discretion, provide new or equivalent replacement parts for any product that proves to be defective under normal usage and service. Replacement parts may be obtained by emailing the address below, calling the number below or by writing to:

**Compass Manufacturing International**  
Freendo Product Service  
6702 Enterprise Drive  
Louisville, KY 40214  
800.626.3525  
[warranty@cmiproduct.com](mailto:warranty@cmiproduct.com)

Revised 5/17/17

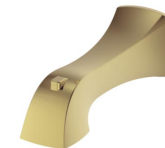
[warranty@cmiproduct.com](mailto:warranty@cmiproduct.com)

© Compass Manufacturing International

800.626.3525



Model No. :	192-6428	Polished Chrome
	192-6429	Brushed Nickel <u>Spotless PVD</u>
	192-6430	Oil-Rubbed Bronze
	192-7269	Matte Black
	192-7270	Matte Gold



## Cardania Contractor Tub Only Trim Pack



## Helpful Information

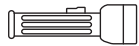
### Helpful Tools

#### Tools:

Gather the necessary tools as shown below to complete the installation of this faucet. Some may not be needed depending on the model of faucet you are installing.



Plumber's Putty  
and/or Silicone



Flashlight



Safety Glasses



Adjustable Wrench



Screwdriver



Pliers



Channel Locks

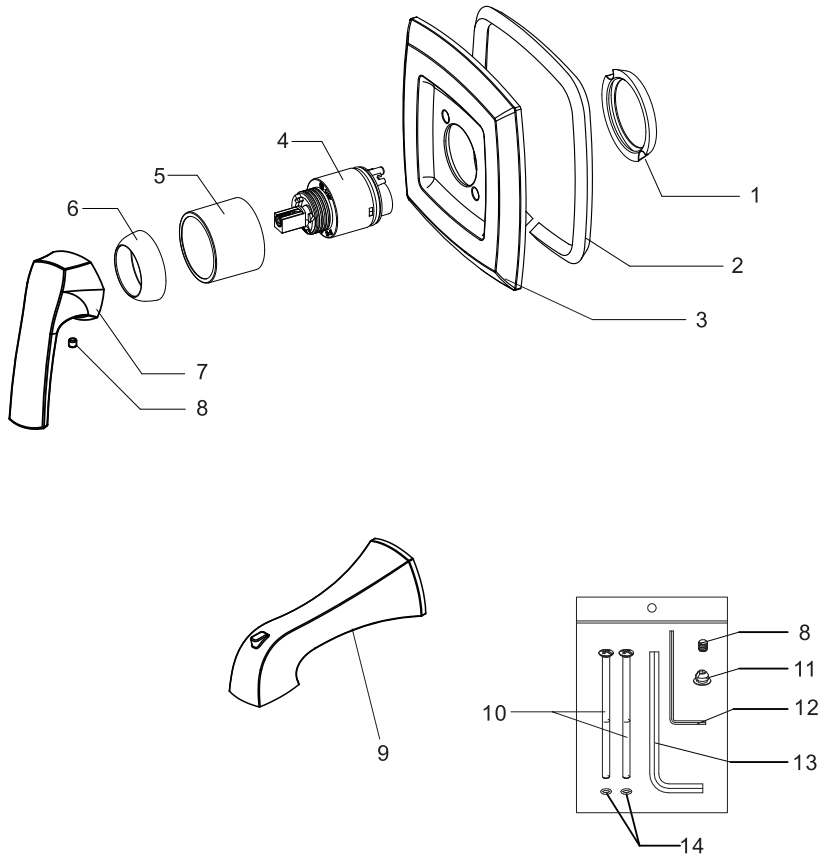
## 5

## Parts List

14	Escutcheon Screw O-rings
13	Allen Key
12	Allen Key
11	Hot/Cold Button
10	Escutcheon Screw
9	Tub Spout
8	Set Screw
7	Handle
6	Cartridge Locknut
5	Cartridge Sleeve
4	Cartridge
3	Escutcheon
2	Sealing Ring
1	Sealing Ring
<b>No.</b>	<b>Part Name</b>

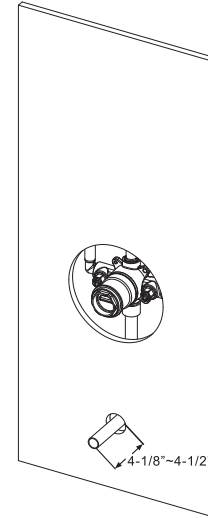
**4**

## Parts Diagram

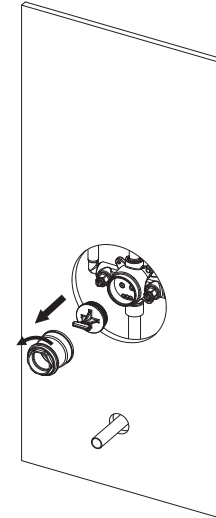
**1**

## Faucet Installation

1.



2.



1. For tub spout installation only: install pipe for spout, use proper length so that the pipe will extend 4-1/8"~4-1/2" from the finish wall.

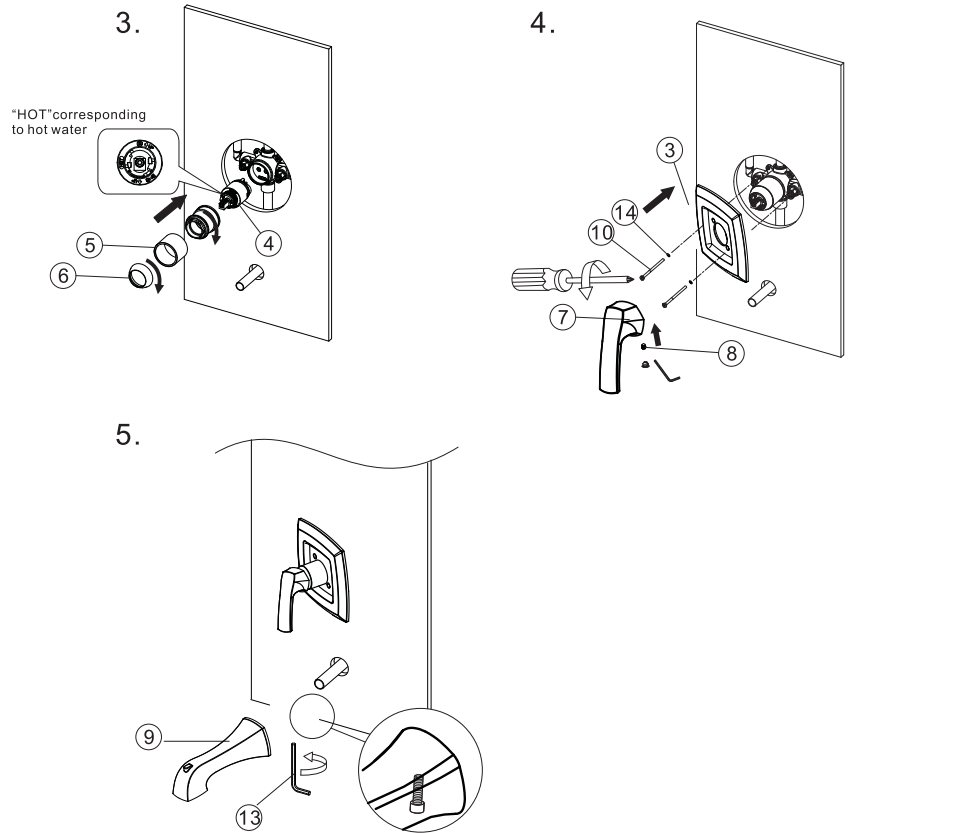
In order to assure proper function, piping from the bottom port of the valve to tub spout outlet must be either 1/2" nominal copper pipe or 1/2" iron pipe. DO NOT use plastic pipe for tub spout.

2. Remove the locknut sleeve, O-ring and test plug as shown.

Note: DO NOT DISCARD locknut sleeve. This item is used to secure the cartridge.

## 2

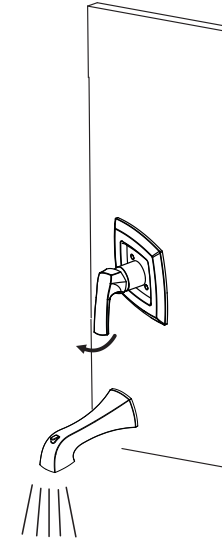
### Faucet Installation



3. Install the cartridge (4), cartridge sleeve (5) and cartridge locknut (6) into the valve body.
4. Close bathtub drain to avoid losing parts. Install escutcheon (3) and secure it with escutcheon screws (10) and escutcheon screw O-rings (14). Make sure valve is in off position. Then assemble the handle (7) and secure it with set screw (8).
5. Position the tub spout (9) as shown, adjust it and and tighten with Allen Key (13).

## 3

### Configuration



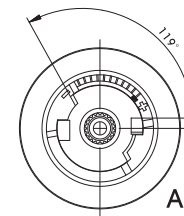
Turn on the water and check for leaks. If there are leaks, please reinstall.

#### Adjusting hot water stop.

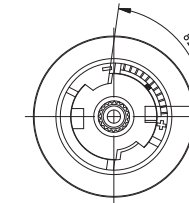
Hot Water Adjustment

Position In The Middle Is Recommended

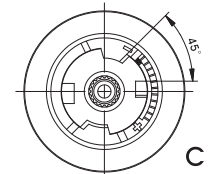
Cold Water Adjustment



High Temperature setting  
(Factory setting)



Average Temperature setting



Low Temperature setting

By default, the temperature limiting device is set to the highest temperature (A). In order to reduce the temperature, remove the temperature limiting device and turn clockwise to the desired position (B or C).